

## ABCC10 Antibody

Catalog No: #37071

Orders: [order@signalwayantibody.com](mailto:order@signalwayantibody.com)Support: [tech@signalwayantibody.com](mailto:tech@signalwayantibody.com)

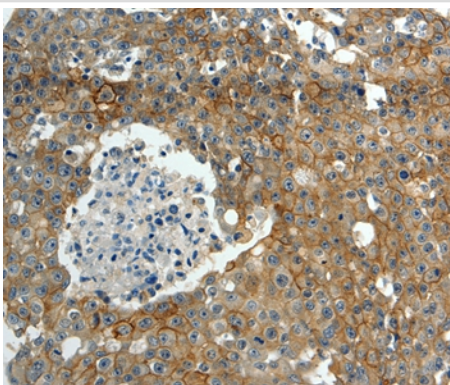
## Description

Product Name	ABCC10 Antibody
Host Species	Rabbit
Clonality	Polyclonal
Purification	Antigen affinity purification.
Applications	IHC
Species Reactivity	Hu
Specificity	The antibody detects endogenous levels of total ABCC10 protein.
Immunogen Type	Peptide
Immunogen Description	Synthetic peptide corresponding to a region derived from internal residues of human ATP-binding cassette, sub-family C (CFTR/MRP), member 10
Target Name	ABCC10
Other Names	MRP7; SIMRP7; EST182763
Accession No.	Swiss-Prot#: Q5T3U5NCBI Gene ID: 89845Gene Accssion: NP_001185863
Uniprot	Q5T3U5
GeneID	89845;
Concentration	1.1mg/ml
Formulation	Rabbit IgG in pH7.4 PBS, 0.05% NaN <sub>3</sub> , 40% Glycerol.
Storage	Store at -20°C

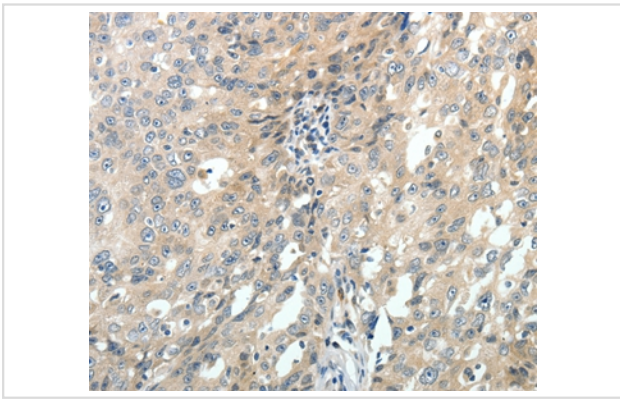
## Application Details

Immunohistochemistry: 1:25-1:50

## Images



Immunohistochemical analysis of paraffin-embedded Human breast cancer tissue using #37071 at dilution 1/30.



Immunohistochemical analysis of paraffin-embedded Human ovarian cancer tissue using #37071 at dilution 1/30.

## Background

The protein encoded by this gene is a member of the superfamily of ATP-binding cassette (ABC) transporters. ABC proteins transport various molecules across extra- and intra-cellular membranes. ABC genes are divided into seven distinct subfamilies (ABC1, MDR/TAP, MRP, ALD, OABP, GCN20, and White). This ABC full-transporter is a member of the MRP subfamily which is involved in multi-drug resistance. Multiple transcript variants encoding different isoforms have been found for this gene.

Note: This product is for in vitro research use only