

ABCG1 Antibody

Catalog No: #37074

Orders: order@signalwayantibody.comSupport: tech@signalwayantibody.com

Description

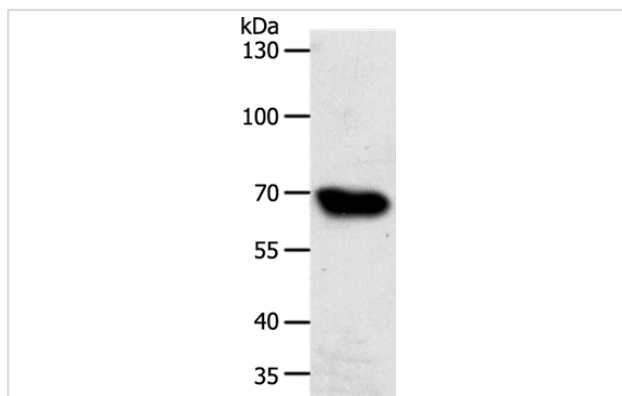
Product Name	ABCG1 Antibody
Host Species	Rabbit
Clonality	Polyclonal
Purification	Antigen affinity purification.
Applications	WB IHC
Species Reactivity	Hu
Specificity	The antibody detects endogenous levels of total ABCG1 protein.
Immunogen Type	Peptide
Immunogen Description	Synthetic peptide corresponding to a region derived from internal residues of human ATP-binding cassette, sub-family G (WHITE), member 1
Target Name	ABCG1
Other Names	ABC8; WHITE1
Accession No.	Swiss-Prot#: P45844NCBI Gene ID: 9619Gene Accssion: NP_004906
Uniprot	P45844
GeneID	9619;
SDS-PAGE MW	76kd
Concentration	1.2mg/ml
Formulation	Rabbit IgG in pH7.4 PBS, 0.05% NaN ₃ , 40% Glycerol.
Storage	Store at -20°C

Application Details

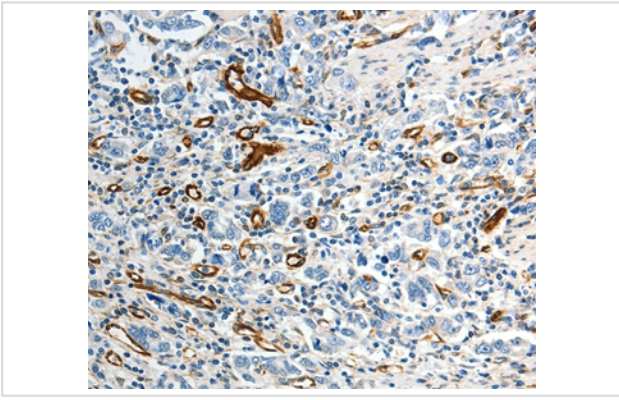
Western blotting: 1:500-1:2000

Immunohistochemistry: 1:25-1:100

Images



Gel: 10%SDS-PAGE
Lysate: 40ug HT-29 cell
Primary antibody: 1/500 dilution
Secondary antibody dilution: 1/8000
Exposure time: 2 minutes



Immunohistochemical analysis of paraffin-embedded Human gastric cancer tissue using #37074 at dilution 1/40.

Background

The protein encoded by this gene is a member of the superfamily of ATP-binding cassette (ABC) transporters. ABC proteins transport various molecules across extra- and intra-cellular membranes. ABC genes are divided into seven distinct subfamilies (ABC1, MDR/TAP, MRP, ALD, OABP, GCN20, White). This protein is a member of the White subfamily. It is involved in macrophage cholesterol and phospholipids transport, and may regulate cellular lipid homeostasis in other cell types. Six alternative splice variants have been identified.

Note: This product is for in vitro research use only