

## ABL2 Antibody

Catalog No: #37077

Orders: order@signalwayantibody.com

Support: tech@signalwayantibody.com

## Description

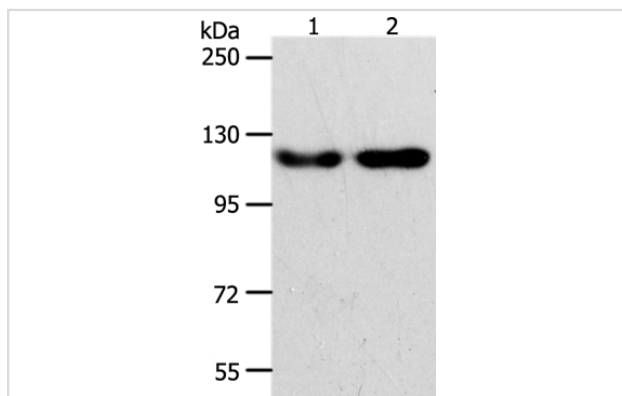
Product Name	ABL2 Antibody
Host Species	Rabbit
Clonality	Polyclonal
Purification	Antigen affinity purification.
Applications	WB IHC
Species Reactivity	Hu Ms
Specificity	The antibody detects endogenous levels of total ABL2 protein.
Immunogen Type	Peptide
Immunogen Description	Synthetic peptide corresponding to residues near the N terminal of human V-abl Abelson murine leukemia viral oncogene homolog 2
Target Name	ABL2
Other Names	ARG; ABLL
Accession No.	Swiss-Prot#: P42684NCBI Gene ID: 27Gene Accssion: NP_001129472
Uniprot	P42684
GeneID	27;
SDS-PAGE MW	128kd
Concentration	0.8mg/ml
Formulation	Rabbit IgG in pH7.4 PBS, 0.05% NaN <sub>3</sub> , 40% Glycerol.
Storage	Store at -20°C

## Application Details

Western blotting: 1:500-1:2000

Immunohistochemistry: 1:25-1:100

## Images



Gel: 8%SDS-PAGE

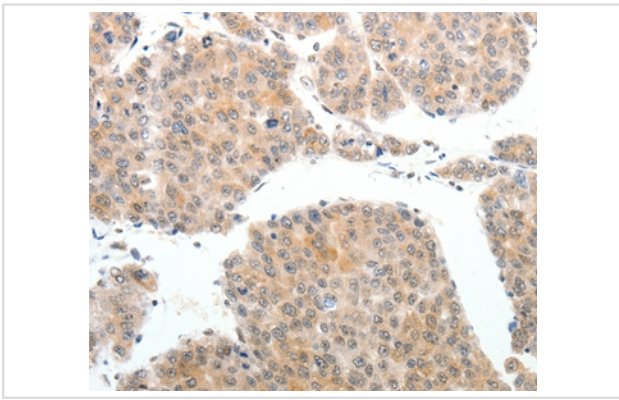
Lysates (from left to right): HeLa and Jurkat cell

Amount of lysate: 40ug per lane

Primary antibody: 1/400 dilution

Secondary antibody dilution: 1/8000

Exposure time: 2 minutes



Immunohistochemical analysis of paraffin-embedded Human liver cancer tissue using #37077 at dilution 1/25.

## Background

This gene encodes a member of the Abelson family of nonreceptor tyrosine protein kinases. The protein is highly similar to the c-abl oncogene 1 protein, including the tyrosine kinase, SH2 and SH3 domains, and it plays a role in cytoskeletal rearrangements through its C-terminal F-actin- and microtubule-binding sequences. This gene is expressed in both normal and tumor cells, and is involved in translocation with the ets variant 6 gene in leukemia. Multiple alternatively spliced transcript variants encoding different protein isoforms have been found for this gene.

Note: This product is for in vitro research use only