

BAZ1A Antibody

Catalog No: #37079

Orders: order@signalwayantibody.comSupport: tech@signalwayantibody.com

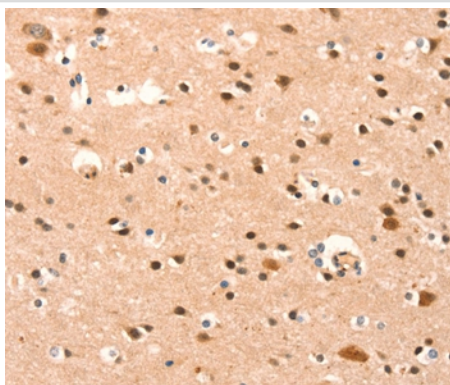
Description

Product Name	BAZ1A Antibody
Host Species	Rabbit
Clonality	Polyclonal
Purification	Antigen affinity purification.
Applications	IHC
Species Reactivity	Hu
Specificity	The antibody detects endogenous levels of total BAZ1A protein.
Immunogen Type	Peptide
Immunogen Description	Synthetic peptide corresponding to residues near the N terminal of human bromodomain adjacent to zinc finger domain, 1A
Target Name	BAZ1A
Other Names	ACF1; WALp1; hACF1; WCRF180
Accession No.	Swiss-Prot#: Q9NRL2NCBI Gene ID: 11177Gene Accsson: NP_038476
Uniprot	Q9NRL2
GeneID	11177;
Concentration	2.9mg/ml
Formulation	Rabbit IgG in pH7.4 PBS, 0.05% NaN ₃ , 40% Glycerol.
Storage	Store at -20°C

Application Details

Immunohistochemistry: 1:25-1:100

Images



Immunohistochemical analysis of paraffin-embedded Human brain tissue using #37079 at dilution 1/25.

Background

Bromodomain adjacent to zinc finger domain protein 1A is a protein that in humans is encoded by the BAZ1A gene. Component of the ACF complex, an ATP-dependent chromatin remodeling complex, that regulates spacing of nucleosomes using ATP to generate evenly spaced

nucleosomes along the chromatin. The ATPase activity of the complex is regulated by the length of flanking DNA. Also involved in facilitating the DNA replication process. BAZ1A is the accessory, non-catalytic subunit of the complex which can enhance and direct the process provided by the ATPase subunit, SMARCA5, probably through targeting pericentromeric heterochromatin in late S phase.

Note: This product is for in vitro research use only