

ACP2 Antibody

Catalog No: #37080

Orders: order@signalwayantibody.com

Support: tech@signalwayantibody.com

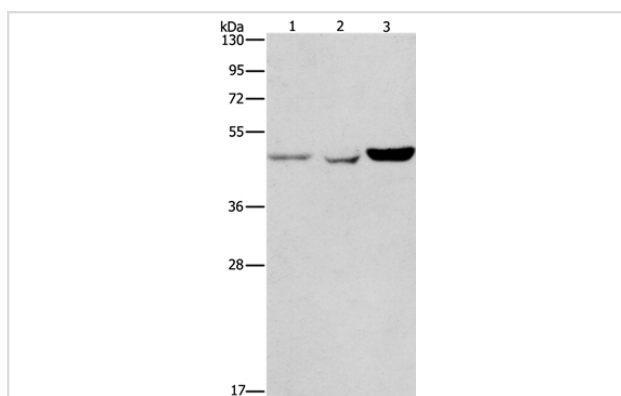
Description

Product Name	ACP2 Antibody
Host Species	Rabbit
Clonality	Polyclonal
Purification	Antigen affinity purification.
Applications	WB
Species Reactivity	Hu
Specificity	The antibody detects endogenous levels of total ACP2 protein.
Immunogen Type	Peptide
Immunogen Description	Synthetic peptide corresponding to residues near the C terminal of human acid phosphatase 2, lysosomal
Target Name	ACP2
Other Names	ACP2; LAP; Lysosomal acid phosphatase; PPAL
Accession No.	Swiss-Prot#: P11117NCBI Gene ID: 53Gene Accssion: NP_001601
Uniprot	P11117
GeneID	53;
SDS-PAGE MW	48kd
Concentration	0.6mg/ml
Formulation	Rabbit IgG in pH7.4 PBS, 0.05% NaN ₃ , 40% Glycerol.
Storage	Store at -20°C

Application Details

Western blotting: 1:200-1:1000

Images



Gel: 8%SDS-PAGE

Lysates (from left to right): A431, A549 and hela cell

Amount of lysate: 40ug per lane

Primary antibody: 1/150 dilution

Secondary antibody dilution: 1/8000

Exposure time: 40 seconds

Background

This gene encodes the beta subunit of lysosomal acid phosphatase (LAP). LAP is chemically and genetically distinct from red cell acid phosphatase. The encoded protein belongs to a family of distinct isoenzymes which hydrolyze orthophosphoric monoesters to alcohol and phosphate. Mutations in

this gene or in the related alpha subunit gene cause acid phosphatase deficiency. Multiple alternatively spliced transcript variants encoding different isoforms have been identified for this gene.

Note: This product is for in vitro research use only