

AFF2 Antibody

Catalog No: #37087

Orders: order@signalwayantibody.comSupport: tech@signalwayantibody.com

Description

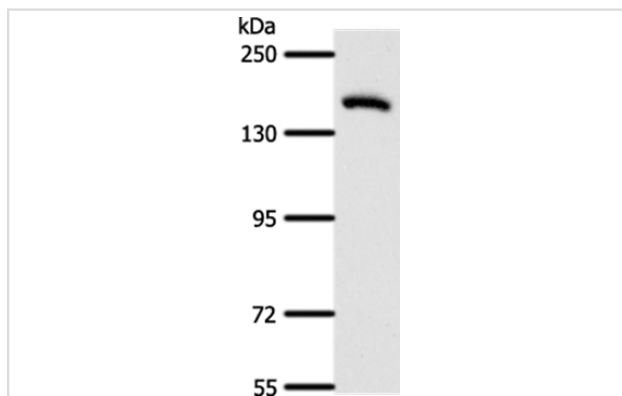
Product Name	AFF2 Antibody
Host Species	Rabbit
Clonality	Polyclonal
Purification	Antigen affinity purification.
Applications	WB IHC
Species Reactivity	Hu Ms
Specificity	The antibody detects endogenous levels of total AFF2 protein.
Immunogen Type	Peptide
Immunogen Description	Synthetic peptide corresponding to residues near the N terminal of human AF4/FMR2 family, member 2
Target Name	AFF2
Other Names	FMR2; MRX2; OX19; FMR2P; FRAXE
Accession No.	Swiss-Prot#: P51816NCBI Gene ID: 2334Gene Accssion: NP_001162593
Uniprot	P51816
GeneID	2334;
SDS-PAGE MW	145kd
Concentration	0.8mg/ml
Formulation	Rabbit IgG in pH7.4 PBS, 0.05% NaN ₃ , 40% Glycerol.
Storage	Store at -20°C

Application Details

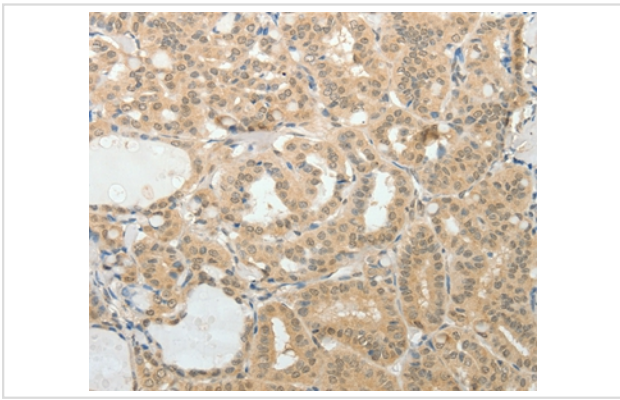
Western blotting: 1:200-1:1000

Immunohistochemistry: 1:25-1:100

Images



Gel: 8%SDS-PAGE
 Lysates (from left to right): Human fetal lung tissue
 Amount of lysate: 40ug per lane
 Primary antibody: 1/400 dilution
 Secondary antibody dilution: 1/8000
 Exposure time: 1 minute



Immunohistochemical analysis of paraffin-embedded Human thyroid cancer tissue using #37087 at dilution 1/25.

Background

This gene encodes a putative transcriptional activator that is a member of the AF4FMR2 gene family. This gene is associated with the folate-sensitive fragile X E locus on chromosome X. A repeat polymorphism in the fragile X E locus results in silencing of this gene causing Fragile X E syndrome. Fragile X E syndrome is a form of nonsyndromic X-linked mental retardation. Alternate splicing results in multiple transcript variants.

Note: This product is for in vitro research use only