

AMH Antibody

Catalog No: #37099

Orders: order@signalwayantibody.comSupport: tech@signalwayantibody.com

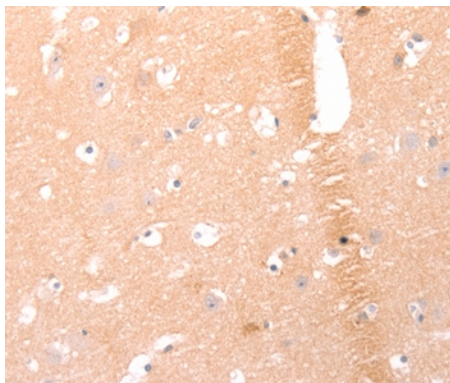
Description

Product Name	AMH Antibody
Host Species	Rabbit
Clonality	Polyclonal
Purification	Antigen affinity purification.
Applications	IHC
Species Reactivity	Hu
Specificity	The antibody detects endogenous levels of total AMH protein.
Immunogen Type	Peptide
Immunogen Description	Synthetic peptide corresponding to residues near the C terminal of human anti-Mullerian hormone
Target Name	AMH
Other Names	MIF; MIS
Accession No.	Swiss-Prot#: P03971 NCBI Gene ID: 268Gene Accssion: NP_000470
Uniprot	P03971
GeneID	268;
Concentration	1mg/ml
Formulation	Rabbit IgG in pH7.4 PBS, 0.05% NaN ₃ , 40% Glycerol.
Storage	Store at -20°C

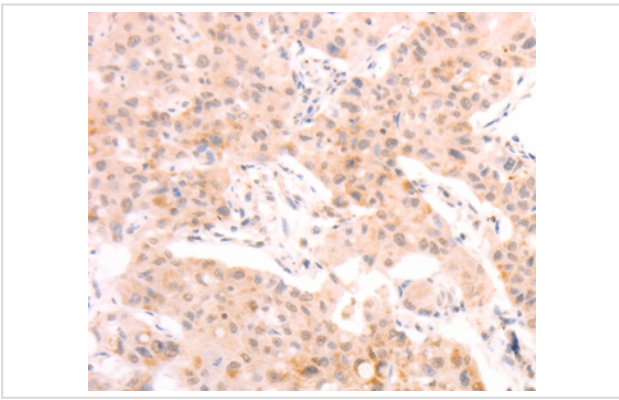
Application Details

Immunohistochemistry: 1:25-1:100

Images



Immunohistochemical analysis of paraffin-embedded Human brain tissue using #37099 at dilution 1/25.



Immunohistochemical analysis of paraffin-embedded Human liver cancer tissue using #37099 at dilution 1/25.

Background

Anti-Mullerian hormone is a member of the transforming growth factor-beta gene family which mediates male sexual differentiation. Anti-Mullerian hormone causes the regression of Mullerian ducts which would otherwise differentiate into the uterus and fallopian tubes. Some mutations in the anti-Mullerian hormone result in persistent Mullerian duct syndrome.

Note: This product is for in vitro research use only