

ANGPTL2 Antibody

Catalog No: #37101

Orders: order@signalwayantibody.comSupport: tech@signalwayantibody.com

Description

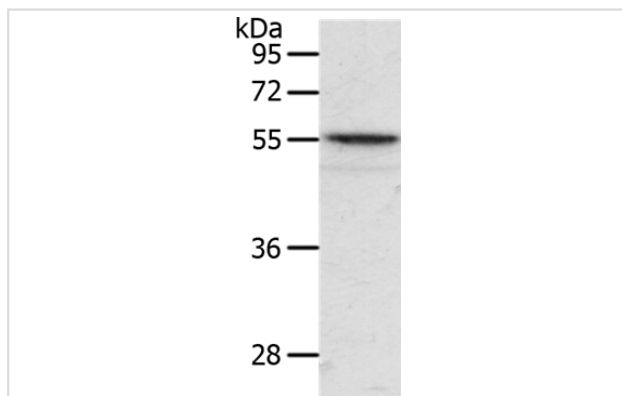
Product Name	ANGPTL2 Antibody
Host Species	Rabbit
Clonality	Polyclonal
Purification	Antigen affinity purification.
Applications	WB IHC
Species Reactivity	Hu Ms
Specificity	The antibody detects endogenous levels of total ANGPTL2 protein.
Immunogen Type	Peptide
Immunogen Description	Synthetic peptide corresponding to a region derived from internal residues of human Angiotensin-like 2
Target Name	ANGPTL2
Other Names	ARP2; HARP
Accession No.	Swiss-Prot#: Q9UKU9NCBI Gene ID: 23452Gene Accsion: NP_036230
Uniprot	Q9UKU9
GeneID	23452;
SDS-PAGE MW	57kd
Concentration	0.8mg/ml
Formulation	Rabbit IgG in pH7.4 PBS, 0.05% NaN ₃ , 40% Glycerol.
Storage	Store at -20°C

Application Details

Western blotting: 1:200-1:1000

Immunohistochemistry: 1:25-1:100

Images



Gel: 10%SDS-PAGE

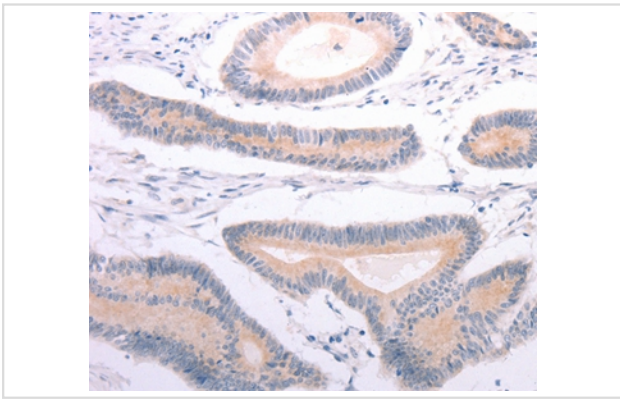
Lysates (from left to right): Mouse intestinum tenue tissue

Amount of lysate: 40ug per lane

Primary antibody: 1/400 dilution

Secondary antibody dilution: 1/8000

Exposure time: 20 seconds



Immunohistochemical analysis of paraffin-embedded Human colon cancer tissue using #37101 at dilution 1/20.

Background

Angiopoietins are members of the vascular endothelial growth factor family and the only known growth factors largely specific for vascular endothelium. Angiopoietin-1, angiopoietin-2, and angiopoietin-4 participate in the formation of blood vessels. ANGPTL2 protein is a secreted glycoprotein with homology to the angiopoietins and may exert a function on endothelial cells through autocrine or paracrine action.

Note: This product is for in vitro research use only