

PGA4 Antibody

Catalog No: #37104

Orders: order@signalwayantibody.com

Support: tech@signalwayantibody.com

Description

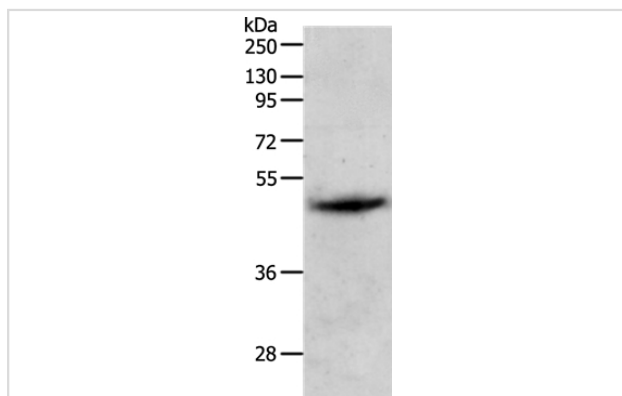
Product Name	PGA4 Antibody
Host Species	Rabbit
Clonality	Polyclonal
Purification	Antigen affinity purification.
Applications	WB IHC
Species Reactivity	Hu
Specificity	The antibody detects endogenous levels of total PGA4 protein.
Immunogen Type	Peptide
Immunogen Description	Synthetic peptide corresponding to a region derived from internal residues of human Pepsinogen 4, group I (pepsinogen A)
Target Name	PGA4
Other Names	PGA3; PGA5
Accession No.	Swiss-Prot#: P0DJ7 NCBI Gene ID: 643847 Gene Accssion: NP_001073276
Uniprot	P0DJ7
GeneID	643847;
SDS-PAGE MW	42kd
Concentration	2.1mg/ml
Formulation	Rabbit IgG in pH7.4 PBS, 0.05% NaN ₃ , 40% Glycerol.
Storage	Store at -20°C

Application Details

Western blotting: 1:500-1:2000

Immunohistochemistry: 1:25-1:100

Images



Gel: 10%SDS-PAGE

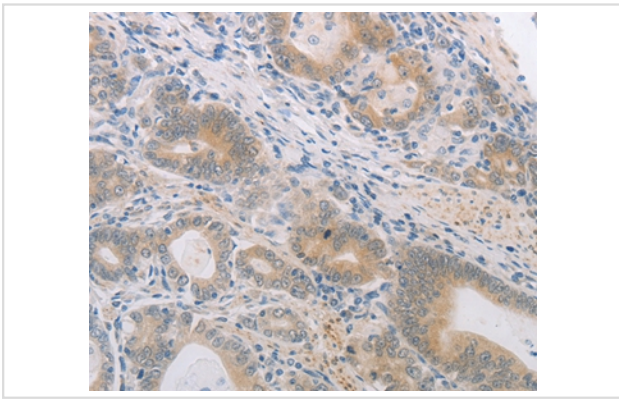
Lysates (from left to right): Human liver cancer tissue

Amount of lysate: 60ug per lane

Primary antibody: 1/1000 dilution

Secondary antibody dilution: 1/8000

Exposure time: 10 minutes



Immunohistochemical analysis of paraffin-embedded Human gastric cancer tissue using #37104 at dilution 1/60.

Background

The genes coding for human pepsinogen (PGA3, PGA4, and PGA5) were assigned to chromosome region 11q13 by in situ hybridization. Previously we localized the PGA gene complex to a centromeric region of chromosome 11 (p11---q13) by Southern blot analysis of mouse-human somatic cell hybrids. Shows particularly broad specificity; although bonds involving phenylalanine and leucine are preferred, many others are also cleaved to some extent.

Note: This product is for in vitro research use only