

TSC2 Antibody

Catalog No: #37108

Orders: order@signalwayantibody.comSupport: tech@signalwayantibody.com

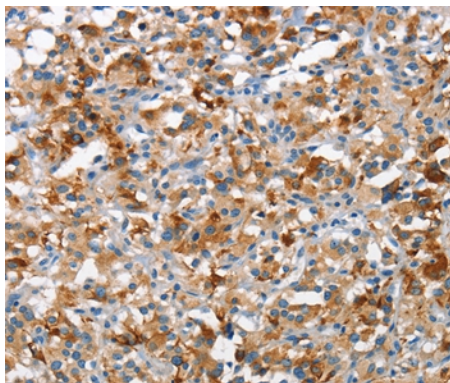
Description

Product Name	TSC2 Antibody
Host Species	Rabbit
Clonality	Polyclonal
Purification	Antigen affinity purification.
Applications	IHC
Species Reactivity	Hu
Specificity	The antibody detects endogenous levels of total TSC2 protein.
Immunogen Type	Peptide
Immunogen Description	Synthetic peptide corresponding to residues near the C terminal of human tuberous sclerosis 2
Target Name	TSC2
Other Names	LAM; TSC4
Accession No.	Swiss-Prot#: P49815NCBI Gene ID: 7249Gene Accssion: NP_000539
Uniprot	P49815
GeneID	7249;
Concentration	1.7mg/ml
Formulation	Rabbit IgG in pH7.4 PBS, 0.05% NaN ₃ , 40% Glycerol.
Storage	Store at -20°C

Application Details

Immunohistochemistry: 1:15-1:50

Images



Immunohistochemical analysis of paraffin-embedded Human thyroid cancer tissue using #37108 at dilution 1/15.

Background

Mutations in this gene lead to tuberous sclerosis complex. Its gene product is believed to be a tumor suppressor and is able to stimulate specific GTPases. The protein associates with hamartin in a cytosolic complex, possibly acting as a chaperone for hamartin. Alternative splicing results in multiple transcript variants encoding different isoforms.

Note: This product is for in vitro research use only