

ARPC2 Antibody

Catalog No: #37115

Orders: order@signalwayantibody.com

Support: tech@signalwayantibody.com

Description

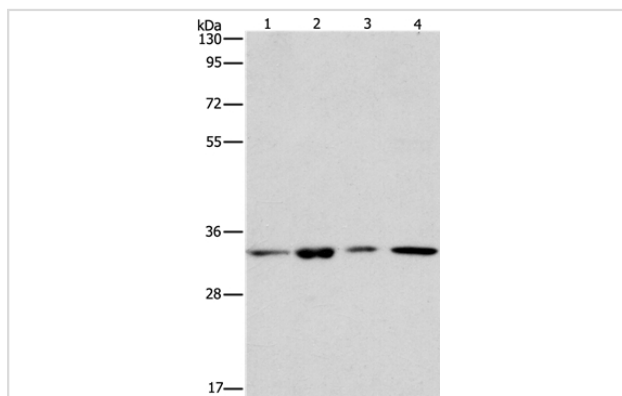
Product Name	ARPC2 Antibody
Host Species	Rabbit
Clonality	Polyclonal
Purification	Antigen affinity purification.
Applications	WB IHC
Species Reactivity	Hu Ms Rt
Specificity	The antibody detects endogenous levels of total ARPC2 protein.
Immunogen Type	Peptide
Immunogen Description	Synthetic peptide corresponding to residues near the N terminal of human actin related protein 2/3 complex, subunit 2, 34kDa
Target Name	ARPC2
Other Names	ARC34; PRO2446; p34-Arc; PNAS-139
Accession No.	Swiss-Prot#: O15144NCBI Gene ID: 10109Gene Accssion: NP_005722
Uniprot	O15144
GeneID	10109;
SDS-PAGE MW	34kd
Concentration	2.1mg/ml
Formulation	Rabbit IgG in pH7.4 PBS, 0.05% NaN ₃ , 40% Glycerol.
Storage	Store at -20°C

Application Details

Western blotting: 1:200-1:1000

Immunohistochemistry: 1:25-1:100

Images



Gel: 8%SDS-PAGE

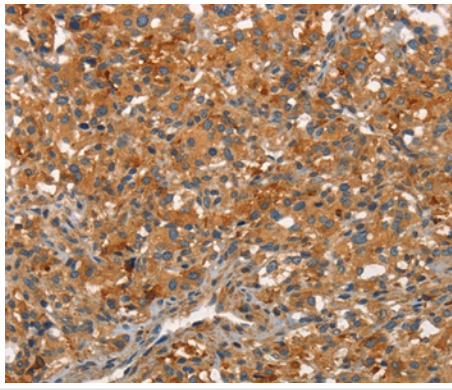
Lysates (from left to right): 231 cell and human fetal brain tissue, NIH/3T3 and PC3 cell

Amount of lysate: 40ug per lane

Primary antibody: 1/350 dilution

Secondary antibody dilution: 1/8000

Exposure time: 40 seconds



Immunohistochemical analysis of paraffin-embedded Human thyroid cancer tissue using #37115 at dilution 1/30.

Background

This gene encodes one of seven subunits of the human Arp2/3 protein complex. The Arp2/3 protein complex has been implicated in the control of actin polymerization in cells and has been conserved through evolution. The exact role of the protein encoded by this gene, the p34 subunit, has yet to be determined. Two alternatively spliced variants have been characterized to date. Additional alternatively spliced variants have been described but their full length nature has not been determined.

Note: This product is for in vitro research use only