

## ARPC4 Antibody

Catalog No: #37116

Orders: [order@signalwayantibody.com](mailto:order@signalwayantibody.com)Support: [tech@signalwayantibody.com](mailto:tech@signalwayantibody.com)

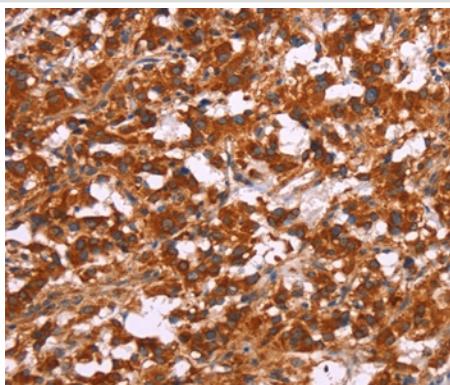
## Description

Product Name	ARPC4 Antibody
Host Species	Rabbit
Clonality	Polyclonal
Purification	Antigen affinity purification.
Applications	IHC
Species Reactivity	Hu Ms
Specificity	The antibody detects endogenous levels of total ARPC4 protein.
Immunogen Type	Peptide
Immunogen Description	Synthetic peptide corresponding to a region derived from internal residues of human actin related protein 2/3 complex, subunit 4, 20kDa
Target Name	ARPC4
Other Names	ARC20; P20-ARC
Accession No.	Swiss-Prot#: P59998NCBI Gene ID: 10093Gene Accssion: NP_005709
Uniprot	P59998
GeneID	10093;
Concentration	1.2mg/ml
Formulation	Rabbit IgG in pH7.4 PBS, 0.05% NaN <sub>3</sub> , 40% Glycerol.
Storage	Store at -20°C

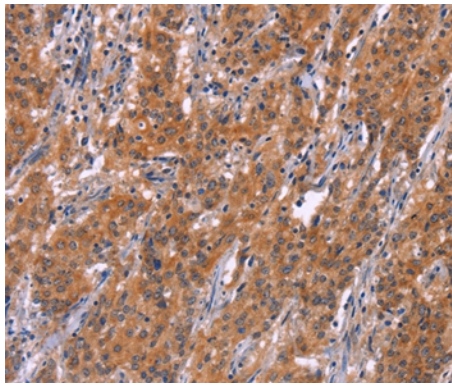
## Application Details

Immunohistochemistry: 1:25-1:100

## Images



Immunohistochemical analysis of paraffin-embedded Human thyroid cancer tissue using #37116 at dilution 1/15.



Immunohistochemical analysis of paraffin-embedded Human gastric cancer tissue using #37116 at dilution 1/15.

## Background

This gene encodes one of seven subunits of the human Arp2/3 protein complex. This complex controls actin polymerization in cells and has been conserved throughout eukaryotic evolution. This gene encodes the p20 subunit, which is necessary for actin nucleation and high-affinity binding to F-actin. Alternative splicing results in multiple transcript variants. Naturally occurring read-through transcription exists between this gene and the downstream tubulin tyrosine ligase-like family, member 3 (TLL3), which results in the production of a fusion protein.

Note: This product is for in vitro research use only