

LIN28A Antibody

Catalog No: #37118

Orders: order@signalwayantibody.comSupport: tech@signalwayantibody.com

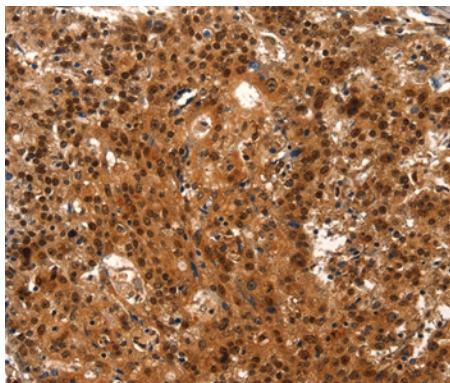
Description

Product Name	LIN28A Antibody
Host Species	Rabbit
Clonality	Polyclonal
Purification	Antigen affinity purification.
Applications	IHC
Species Reactivity	Hu Ms
Specificity	The antibody detects endogenous levels of total LIN28A protein.
Immunogen Type	Peptide
Immunogen Description	Synthetic peptide corresponding to residues near the N terminal of human lin-28 homolog A (C. elegans)
Target Name	LIN28A
Other Names	CSDD1; LIN28; LIN-28; ZCCHC1; lin-28A
Accession No.	Swiss-Prot#: Q9H9Z2NCBI Gene ID: 79727Gene Accssion: NP_078950
Uniprot	Q9H9Z2
GeneID	79727;
Concentration	2.3mg/ml
Formulation	Rabbit IgG in pH7.4 PBS, 0.05% NaN ₃ , 40% Glycerol.
Storage	Store at -20°C

Application Details

Immunohistochemistry: 1:25-1:100

Images



Immunohistochemical analysis of paraffin-embedded Human gastric cancer tissue using #37118 at dilution 1/15.

Background

LIN-28 is a highly conserved, RNA-binding, cytoplasmic protein. It consists of a cold shock domain and retroviral-type (CCHC) zinc finger motifs that were first identified in *Caenorhabditis elegans*. LIN-28 controls the timing of events during embryonic development and is readily expressed in embryos, embryonic stem cells and embryonal carcinoma cells. The presence of LIN-28 persists in some adult tissues including cardiac and skeletal muscle. In differentiating myoblasts, LIN-28 increases protein synthesis efficiency and binds to the growth and differentiation factor IGF-II.

Note: This product is for in vitro research use only