

CBS antibody

Catalog No: #22188

Orders: order@signalwayantibody.com

Support: tech@signalwayantibody.com

Description

Product Name	CBS antibody
Host Species	Rabbit
Clonality	Polyclonal
Purification	Purified by antigen-affinity chromatography.
Applications	WB IHC IF
Species Reactivity	Hu
Immunogen Type	Recombinant Protein
Immunogen Description	Recombinant protein fragment contain a sequence corresponding to a region within amino acids 39 and 221 of CBS
Target Name	CBS
Accession No.	Swiss-Prot:P35520 P0DN79Gene ID:875
Uniprot	P35520
GeneID	102724560;875;
Concentration	0.81mg/ml
Formulation	Supplied in 0.1M Tris-buffered saline with 10% Glycerol (pH7.0). 0.01% Thimerosal was added as a preservative.
Storage	Store at -20°C for long term preservation (recommended). Store at 4°C for short term use.

Application Details

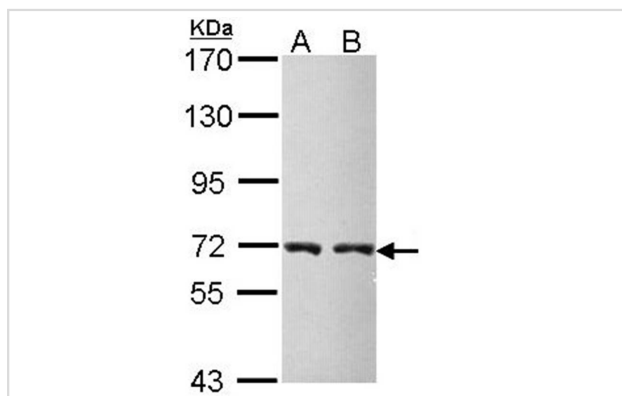
Predicted MW: 61kd

Western blotting: 1:500-1:3000

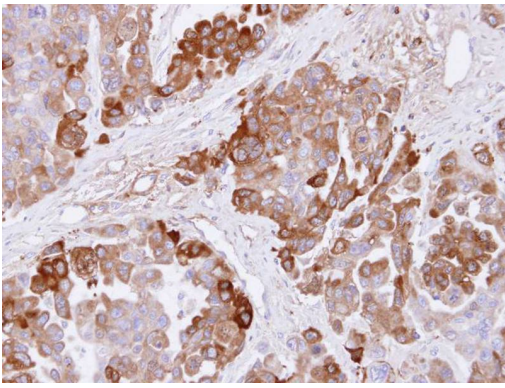
Immunohistochemistry: 1:100-1:500

Immunofluorescence: 1:100-1:200

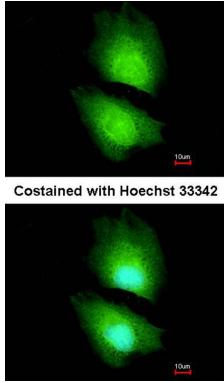
Images



Sample (30 ug of whole cell lysate)
A: Molt-4
B: Raji
7.5% SDS PAGE
Primary antibody diluted at 1: 5000



Immunohistochemical analysis of paraffin-embedded OVCAR3 xenograft, using CBS antibody at 1: 500 dilution.



Immunofluorescence analysis of paraformaldehyde-fixed HeLa, using CBS antibody at 1: 200 dilution.

Background

The protein encoded by this gene acts as a homotetramer to catalyze the conversion of homocysteine to cystathionine, the first step in the transsulfuration pathway. The encoded protein is allosterically activated by adenosyl-methionine and uses pyridoxal phosphate as a cofactor. Defects in this gene can cause cystathionine beta-synthase deficiency (CBS), which can lead to homocystinuria. [provided by RefSeq]

Note: This product is for in vitro research use only