

GDF2 Antibody

Catalog No: #37122

Orders: order@signalwayantibody.comSupport: tech@signalwayantibody.com

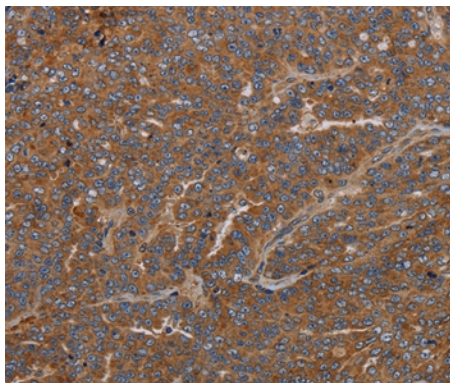
Description

| | |
|-----------------------|--|
| Product Name | GDF2 Antibody |
| Host Species | Rabbit |
| Clonality | Polyclonal |
| Purification | Antigen affinity purification. |
| Applications | IHC |
| Species Reactivity | Hu Ms |
| Specificity | The antibody detects endogenous levels of total GDF2 protein. |
| Immunogen Type | Peptide |
| Immunogen Description | Synthetic peptide corresponding to residues near the C terminal of human growth differentiation factor 2 |
| Target Name | GDF2 |
| Other Names | BMP9; HHT5; BMP-9 |
| Accession No. | Swiss-Prot#: Q9UK05NCBI Gene ID: 2658Gene Accssion: NP_057288 |
| Uniprot | Q9UK05 |
| GeneID | 2658; |
| Concentration | 0.3mg/ml |
| Formulation | Rabbit IgG in pH7.4 PBS, 0.05% NaN ₃ , 40% Glycerol. |
| Storage | Store at -20°C |

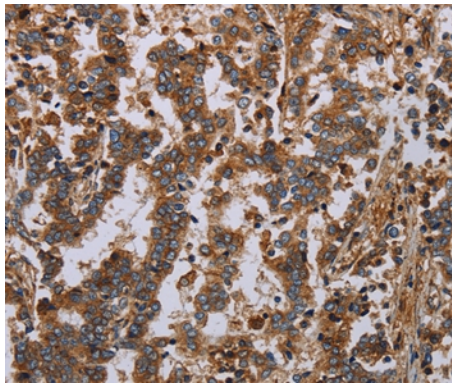
Application Details

Immunohistochemistry: 1:50-1:200

Images



Immunohistochemical analysis of paraffin-embedded Human ovarian cancer tissue using #37122 at dilution 1/40.



Immunohistochemical analysis of paraffin-embedded Human liver cancer tissue using #37122 at dilution 1/40.

Background

The protein encoded by this gene is a member of the bone morphogenetic protein (BMP) family and the TGF-beta superfamily. This group of proteins is characterized by a polybasic proteolytic processing site which is cleaved to produce a mature protein containing seven conserved cysteine residues. The members of this family are regulators of cell growth and differentiation in both embryonic and adult tissues. Studies in rodents suggest that this protein plays a role in the adult liver and in differentiation of cholinergic central nervous system neurons. Mutations in this gene are associated with hereditary hemorrhagic telangiectasia.

Note: This product is for in vitro research use only