

## SMURF1 Antibody

Catalog No: #37123

Orders: [order@signalwayantibody.com](mailto:order@signalwayantibody.com)Support: [tech@signalwayantibody.com](mailto:tech@signalwayantibody.com)

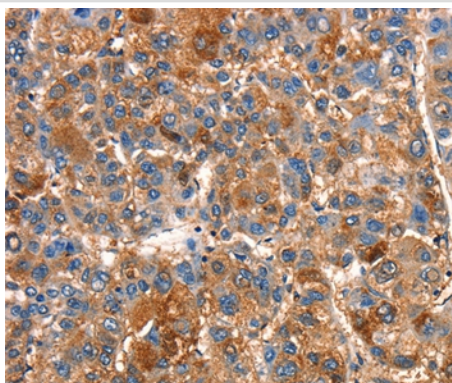
## Description

Product Name	SMURF1 Antibody
Host Species	Rabbit
Clonality	Polyclonal
Purification	Antigen affinity purification.
Applications	IHC
Species Reactivity	Hu
Specificity	The antibody detects endogenous levels of total SMURF1 protein.
Immunogen Type	Peptide
Immunogen Description	Synthetic peptide corresponding to a region derived from internal residues of human SMAD specific E3 ubiquitin protein ligase 1
Target Name	SMURF1
Other Names	hSMURF1; KIAA1625; SMUF1
Accession No.	Swiss-Prot#: Q9HCE7NCBI Gene ID: 57154Gene Accssion: NP_065162
Uniprot	Q9HCE7
GeneID	57154;
Concentration	1.8mg/ml
Formulation	Rabbit IgG in pH7.4 PBS, 0.05% NaN <sub>3</sub> , 40% Glycerol.
Storage	Store at -20°C

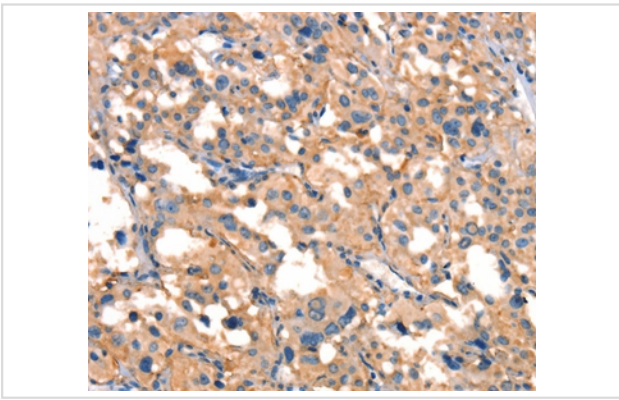
## Application Details

Immunohistochemistry: 1:25-1:100

## Images



Immunohistochemical analysis of paraffin-embedded Human liver cancer tissue using #37123 at dilution 1/15.



Immunohistochemical analysis of paraffin-embedded Human gastric cancer tissue using #37123 at dilution 1/15.

## Background

This gene encodes a ubiquitin ligase that is specific for receptor-regulated SMAD proteins in the bone morphogenetic protein (BMP) pathway. This protein plays a key role in the regulation of cell motility, cell signalling, and cell polarity. Alternative splicing results in multiple transcript variants encoding different isoforms.

Note: This product is for in vitro research use only