

## PRKD1 Antibody

Catalog No: #37125

Orders: order@signalwayantibody.com

Support: tech@signalwayantibody.com

## Description

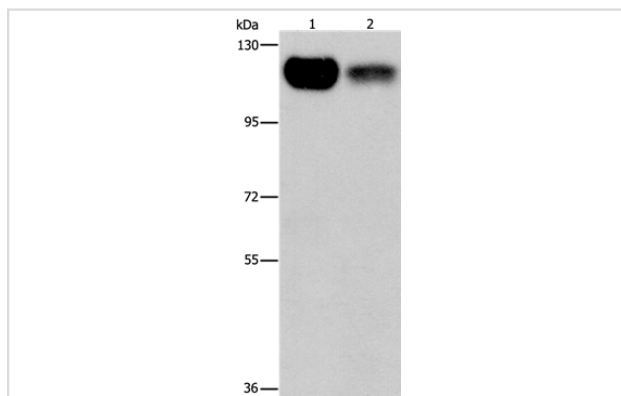
Product Name	PRKD1 Antibody
Host Species	Rabbit
Clonality	Polyclonal
Purification	Antigen affinity purification.
Applications	WB IHC
Species Reactivity	Hu Ms
Specificity	The antibody detects endogenous levels of total PRKD1 protein.
Immunogen Type	Peptide
Immunogen Description	Synthetic peptide corresponding to residues near the C terminal of human protein kinase D1
Target Name	PRKD1
Other Names	PKD; PKCM; PRKCM; PKC-MU
Accession No.	Swiss-Prot#: Q15139NCBI Gene ID: 5587Gene Accssion: NP_002733
Uniprot	Q15139
GeneID	5587;
SDS-PAGE MW	102kd
Concentration	3.3mg/ml
Formulation	Rabbit IgG in pH7.4 PBS, 0.05% NaN <sub>3</sub> , 40% Glycerol.
Storage	Store at -20°C

## Application Details

Western blotting: 1:500-1:2000

Immunohistochemistry: 1:50-1:200

## Images



Gel: 6%SDS-PAGE

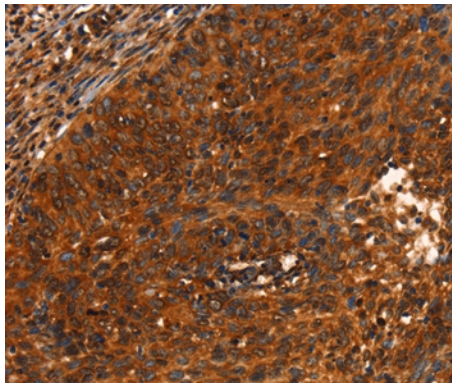
Lysates (from left to right): 293T and NIH/3T3 cell

Amount of lysate: 40ug per lane

Primary antibody: 1/550 dilution

Secondary antibody dilution: 1/8000

Exposure time: 30 seconds



Immunohistochemical analysis of paraffin-embedded Human cervical cancer tissue using #37125 at dilution 1/40.

## Background

---

PRKD1 is a serine/threonine kinase that regulates a variety of cellular functions, including membrane receptor signaling, transport at the Golgi, protection from oxidative stress at the mitochondria, gene transcription, and regulation of cell shape, motility, and adhesion.

---

Note: This product is for in vitro research use only