

PRKD3 Antibody

Catalog No: #37126

Orders: order@signalwayantibody.com

Support: tech@signalwayantibody.com

Description

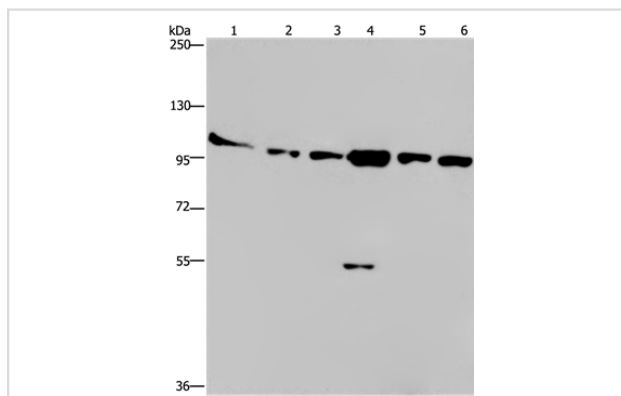
Product Name	PRKD3 Antibody
Host Species	Rabbit
Clonality	Polyclonal
Purification	Antigen affinity purification.
Applications	WB IHC
Species Reactivity	Hu Ms
Specificity	The antibody detects endogenous levels of total PRKD3 protein.
Immunogen Type	Peptide
Immunogen Description	Synthetic peptide corresponding to residues near the C terminal of human protein kinase D3
Target Name	PRKD3
Other Names	EPK2; PKD3; PRKCN; PKC-NU; nPKC-NU
Accession No.	Swiss-Prot#: O94806NCBI Gene ID: 23683Gene Accssion: NP_005804
Uniprot	O94806
GeneID	23683;
SDS-PAGE MW	100kd
Concentration	3.2mg/ml
Formulation	Rabbit IgG in pH7.4 PBS, 0.05% NaN ₃ , 40% Glycerol.
Storage	Store at -20°C

Application Details

Western blotting: 1:200-1:1000

Immunohistochemistry: 1:50-1:200

Images



Gel: 6%SDS-PAGE

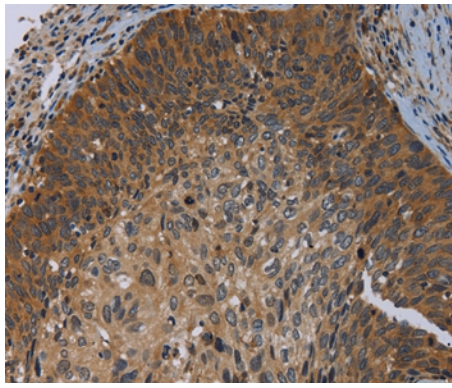
Lysates (from left to right): Human testis tissue, K562, A549, Raji, NIH/3T3 and Hela cell

Amount of lysate: 40ug per lane

Primary antibody: 1/200 dilution

Secondary antibody dilution: 1/8000

Exposure time: 10 minutes



Immunohistochemical analysis of paraffin-embedded Human cervical cancer tissue using #37126 at dilution 1/50.

Background

Protein kinase C (PKC) is a family of serine- and threonine-specific protein kinases that can be activated by calcium and the second messenger diacylglycerol. PKC family members phosphorylate a wide variety of protein targets and are known to be involved in diverse cellular signaling pathways. PKC family members also serve as major receptors for phorbol esters, a class of tumor promoters. Each member of the PKC family has a specific expression profile and is believed to play a distinct role. The protein encoded by this gene is one of the PKC family members.

Note: This product is for in vitro research use only