

MOB1B Antibody

Catalog No: #37127

Orders: order@signalwayantibody.comSupport: tech@signalwayantibody.com

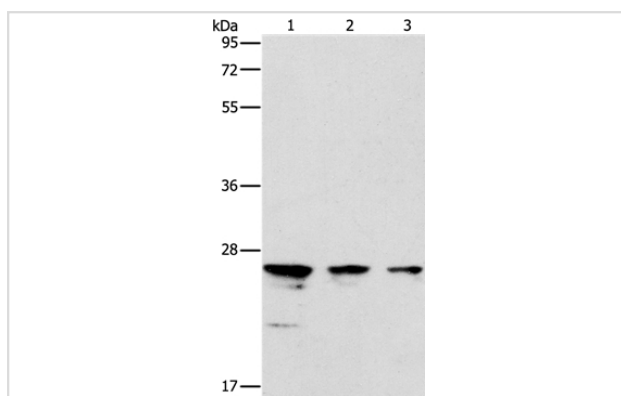
Description

Product Name	MOB1B Antibody
Host Species	Rabbit
Clonality	Polyclonal
Purification	Antigen affinity purification.
Applications	WB
Species Reactivity	Hu Ms
Specificity	The antibody detects endogenous levels of total MOB1B protein.
Immunogen Type	Peptide
Immunogen Description	Synthetic peptide corresponding to residues near the C terminal of human MOB kinase activator 1B
Target Name	MOB1B
Other Names	MATS2; MOB4A; MOBKL1A
Accession No.	Swiss-Prot#: Q7L9L4 NCBI Gene ID: 92597 Gene Accsion: NP_775739
Uniprot	Q7L9L4
GeneID	92597;
SDS-PAGE MW	25kd
Concentration	0.9mg/ml
Formulation	Rabbit IgG in pH7.4 PBS, 0.05% NaN ₃ , 40% Glycerol.
Storage	Store at -20°C

Application Details

Western blotting: 1:200-1:1000

Images



Gel: 12%SDS-PAGE
 Lysates (from left to right): Jurkat and K562 cell, mouse testis tissue
 Amount of lysate: 40ug per lane
 Primary antibody: 1/225 dilution
 Secondary antibody dilution: 1/8000
 Exposure time: 1 minute

Background

The protein encoded by this gene is similar to the yeast Mob1 protein. Yeast Mob1 binds Mps1p, a protein kinase essential for spindle pole body duplication and mitotic checkpoint regulation. Three transcript variants encoding different isoforms have been found for this gene. Activator of

LATS1/2 in the Hippo signaling pathway which plays a pivotal role in organ size control and tumor suppression by restricting proliferation and promoting apoptosis. The core of this pathway is composed of a kinase cascade wherein STK3/MST2 and STK4/MST1, in complex with its regulatory protein SAV1, phosphorylates and activates LATS1/2 in complex with its regulatory protein MOB1, which in turn phosphorylates and inactivates YAP1 oncoprotein and WWTR1/TAZ.

Note: This product is for in vitro research use only