

LATS2 Antibody

Catalog No: #37128

Orders: order@signalwayantibody.comSupport: tech@signalwayantibody.com

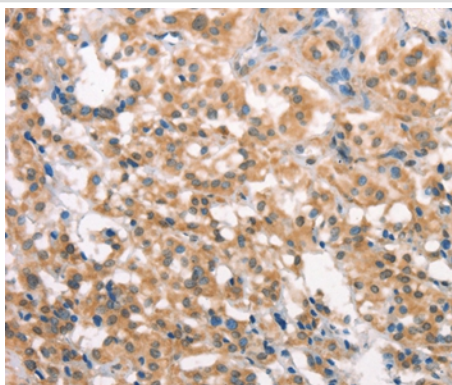
Description

Product Name	LATS2 Antibody
Host Species	Rabbit
Clonality	Polyclonal
Purification	Antigen affinity purification.
Applications	IHC
Species Reactivity	Hu Ms
Specificity	The antibody detects endogenous levels of total LATS2 protein.
Immunogen Type	Peptide
Immunogen Description	Synthetic peptide corresponding to a region derived from internal residues of human large tumor suppressor kinase 2
Target Name	LATS2
Other Names	KPM
Accession No.	Swiss-Prot#: Q9NRM7NCBI Gene ID: 26524Gene Accssion: NP_055387
Uniprot	Q9NRM7
GeneID	26524;
Concentration	1.7mg/ml
Formulation	Rabbit IgG in pH7.4 PBS, 0.05% NaN ₃ , 40% Glycerol.
Storage	Store at -20°C

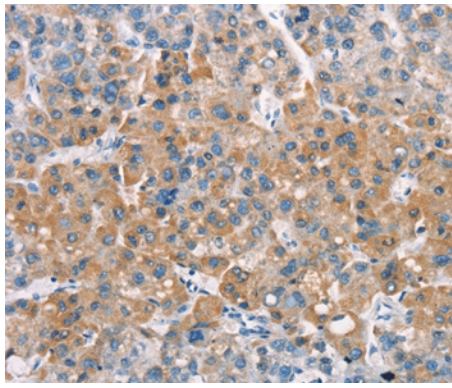
Application Details

Immunohistochemistry: 1:25-1:100

Images



Immunohistochemical analysis of paraffin-embedded Human thyroid cancer tissue using #37128 at dilution 1/30.



Immunohistochemical analysis of paraffin-embedded Human liver cancer tissue using #37128 at dilution 1/30.

Background

This gene encodes a serine/threonine protein kinase belonging to the LATS tumor suppressor family. The protein localizes to centrosomes during interphase, and early and late metaphase. It interacts with the centrosomal proteins aurora-A and ajuba and is required for accumulation of gamma-tubulin and spindle formation at the onset of mitosis. It also interacts with a negative regulator of p53 and may function in a positive feedback loop with p53 that responds to cytoskeleton damage. Additionally, it can function as a co-repressor of androgen-responsive gene expression.

Note: This product is for in vitro research use only