

MAPK13 Antibody

Catalog No: #37132

Orders: order@signalwayantibody.com

Support: tech@signalwayantibody.com

Description

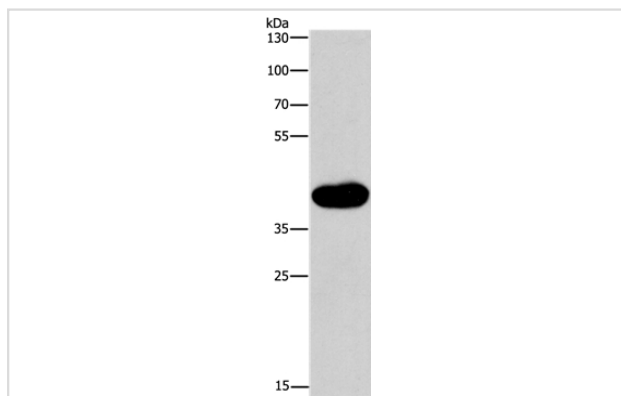
Product Name	MAPK13 Antibody
Host Species	Rabbit
Clonality	Polyclonal
Purification	Antigen affinity purification.
Applications	WB IHC
Species Reactivity	Hu Ms Rt
Specificity	The antibody detects endogenous levels of total MAPK13 protein.
Immunogen Type	Peptide
Immunogen Description	Synthetic peptide corresponding to residues near the C terminal of human mitogen-activated protein kinase 13
Target Name	MAPK13
Other Names	SAPK4; PRKM13; MAPK 13; MAPK-13; p38delta
Accession No.	Swiss-Prot#: O15264NCBI Gene ID: 5603Gene Accssion: NP_002745
Uniprot	O15264
GeneID	5603;
SDS-PAGE MW	42kd
Concentration	1.3mg/ml
Formulation	Rabbit IgG in pH7.4 PBS, 0.05% NaN ₃ , 40% Glycerol.
Storage	Store at -20°C

Application Details

Western blotting: 1:500-1:2000

Immunohistochemistry: 1:25-1:100

Images



Gel: 8%SDS-PAGE

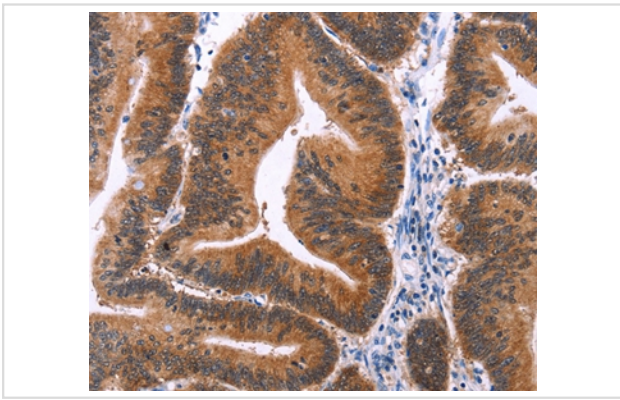
Lysates (from left to right): Mouse intestinum tenue tissue

Amount of lysate: 40ug per lane

Primary antibody: 1/200 dilution

Secondary antibody dilution: 1/8000

Exposure time: 1 minute



Immunohistochemical analysis of paraffin-embedded Human colon cancer tissue using #37132 at dilution 1/15.

Background

This gene encodes a member of the mitogen-activated protein (MAP) kinase family. MAP kinases act as an integration point for multiple biochemical signals, and are involved in a wide variety of cellular processes such as proliferation, differentiation, transcription regulation and development. The encoded protein is a p38 MAP kinase and is activated by proinflammatory cytokines and cellular stress. Substrates of the encoded protein include the transcription factor ATF2 and the microtubule dynamics regulator stathmin. Alternatively spliced transcript variants have been observed for this gene.?

Note: This product is for in vitro research use only