

ORAI1 Antibody

Catalog No: #37133

Orders: order@signalwayantibody.comSupport: tech@signalwayantibody.com

Description

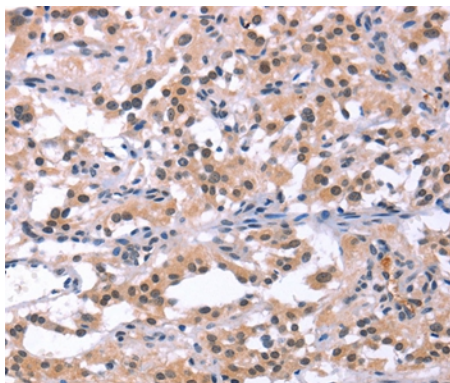
Product Name	ORAI1 Antibody
Host Species	Rabbit
Clonality	Polyclonal
Purification	Antigen affinity purification.
Applications	IHC WB
Species Reactivity	Hu
Specificity	The antibody detects endogenous levels of total ORAI1 protein.
Immunogen Type	Peptide
Immunogen Description	Synthetic peptide corresponding to a region derived from internal residues of human ORAI calcium release-activated calcium modulator 1
Target Name	ORAI1
Other Names	IMD9; ORAT1; CRACM1; TMEM142A
Accession No.	Swiss-Prot#: Q96D31NCBI Gene ID: 84876Gene Accssion: NP_116179
Uniprot	Q96D31
GeneID	84876;
Concentration	1.6mg/ml
Formulation	Rabbit IgG in pH7.4 PBS, 0.05% NaN ₃ , 40% Glycerol.
Storage	Store at -20°C

Application Details

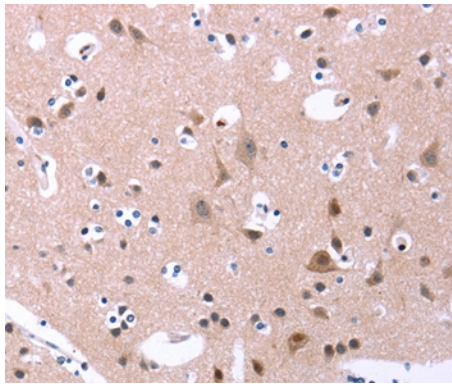
Immunohistochemistry: 1:25-1:100

Western Blot: 200-1000

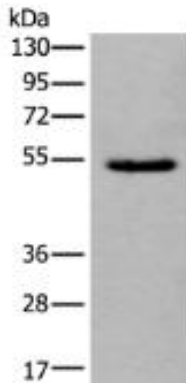
Images



Immunohistochemical analysis of paraffin-embedded Human thyroid cancer tissue using #37133 at dilution 1/25.



Immunohistochemical analysis of paraffin-embedded Human brain tissue using #37133 at dilution 1/25.



Gel: 8%SDS-PAGE, Lysate: 40 μ g, Lane: Human ovarian cancer tissue lysate, Primary antibody: D160923(ORAI1 Antibody) at dilution 1/200, Secondary antibody: Goat anti rabbit IgG at 1/8000 dilution, Exposure time: 1 minute

Background

The protein encoded by this gene is a membrane calcium channel subunit that is activated by the calcium sensor STIM1 when calcium stores are depleted. This type of channel is the primary way for calcium influx into T-cells. Defects in this gene are a cause of immune dysfunction with T-cell inactivation due to calcium entry defect type 1 (IDTICED1).

Note: This product is for in vitro research use only