

MAP3K2 Antibody

Catalog No: #37134

Orders: order@signalwayantibody.comSupport: tech@signalwayantibody.com

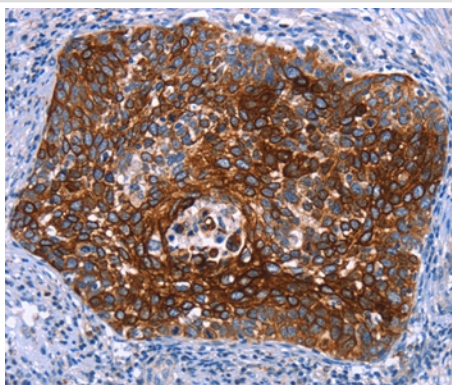
Description

Product Name	MAP3K2 Antibody
Host Species	Rabbit
Clonality	Polyclonal
Purification	Antigen affinity purification.
Applications	IHC
Species Reactivity	Hu Ms
Specificity	The antibody detects endogenous levels of total MAP3K2 protein.
Immunogen Type	Peptide
Immunogen Description	Synthetic peptide corresponding to a region derived from internal residues of human mitogen-activated protein kinase kinase kinase 2
Target Name	MAP3K2
Other Names	MEKK2; MEKK2B
Accession No.	Swiss-Prot#: Q9Y2U5NCBI Gene ID: 10746Gene Accsson: NP_006600
Uniprot	Q9Y2U5
GeneID	10746;
Concentration	0.8mg/ml
Formulation	Rabbit IgG in pH7.4 PBS, 0.05% NaN ₃ , 40% Glycerol.
Storage	Store at -20°C

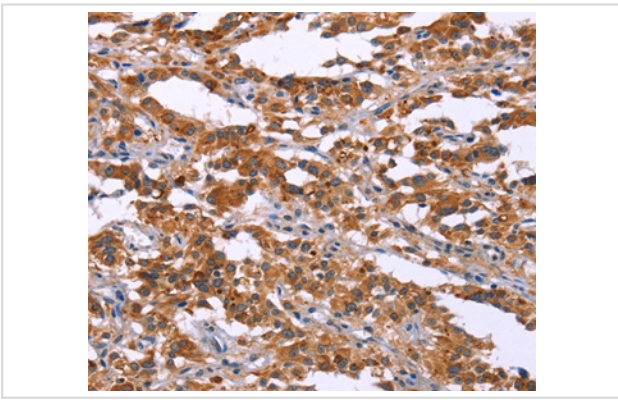
Application Details

Immunohistochemistry: 1:25-1:100

Images



Immunohistochemical analysis of paraffin-embedded Human cervical cancer tissue using #37134 at dilution 1/15.



Immunohistochemical analysis of paraffin-embedded Human thyroid cancer tissue using #37134 at dilution 1/15.

Background

The protein encoded by this gene is a member of serine/threonine protein kinase family. This kinase preferentially activates other kinases involved in the MAP kinase signaling pathway. This kinase has been shown to directly phosphorylate and activate Ikappa B kinases, and thus plays a role in NF-kappa B signaling pathway. This kinase has also been found to bind and activate protein kinase C-related kinase 2, which suggests its involvement in a regulated signaling process.?

Note: This product is for in vitro research use only