

BAG6 Antibody

Catalog No: #37146

Orders: order@signalwayantibody.com

Support: tech@signalwayantibody.com

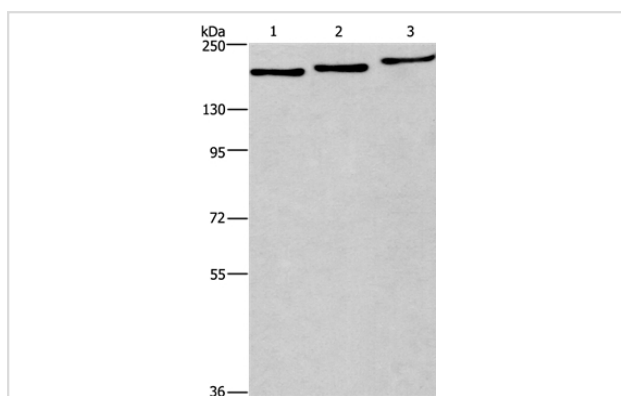
Description

Product Name	BAG6 Antibody
Host Species	Rabbit
Clonality	Polyclonal
Purification	Antigen affinity purification.
Applications	WB
Species Reactivity	Hu
Specificity	The antibody detects endogenous levels of total BAG6 protein.
Immunogen Type	Peptide
Immunogen Description	Synthetic peptide corresponding to residues near the C terminal of human BCL2-associated athanogene 6
Target Name	BAG6
Other Names	G3; BAT3; BAG-6; D6S52E
Accession No.	Swiss-Prot#: P46379 NCBI Gene ID: 7917 Gene Accssion: NP_004630
Uniprot	P46379
GeneID	7917;
SDS-PAGE MW	119kd
Concentration	1.1mg/ml
Formulation	Rabbit IgG in pH7.4 PBS, 0.05% NaN ₃ , 40% Glycerol.
Storage	Store at -20°C

Application Details

Western blotting: 1:200-1:1000

Images



Gel: 6%SDS-PAGE

Lysates (from left to right): A375, 293T and hepG2 cell

Amount of lysate: 40ug per lane

Primary antibody: 1/300 dilution

Secondary antibody dilution: 1/8000

Exposure time: 5 minutes

Background

This gene was first characterized as part of a cluster of genes located within the human major histocompatibility complex class III region. This gene encodes a nuclear protein that is cleaved by caspase 3 and is implicated in the control of apoptosis. In addition, the protein forms a complex with E1A

binding protein p300 and is required for the acetylation of p53 in response to DNA damage. Multiple transcript variants encoding different isoforms have been found for this gene.?

Note: This product is for in vitro research use only