

Description

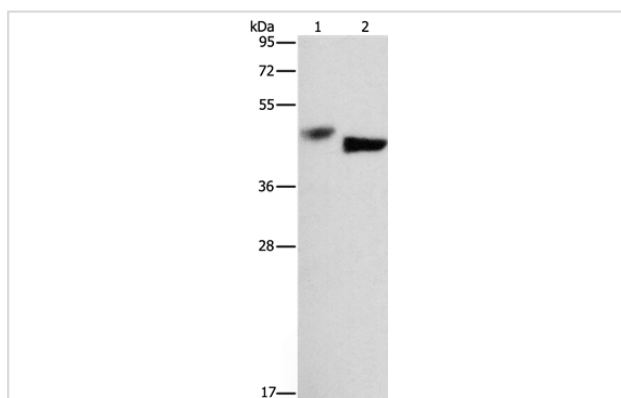
Product Name	BCL3 Antibody
Host Species	Rabbit
Clonality	Polyclonal
Purification	Antigen affinity purification.
Applications	WB IHC
Species Reactivity	Hu Ms
Specificity	The antibody detects endogenous levels of total BCL3 protein.
Immunogen Type	Peptide
Immunogen Description	Synthetic peptide corresponding to residues near the N terminal of human B-cell CLL/lymphoma 3
Target Name	BCL3
Other Names	BCL4; D19S37
Accession No.	Swiss-Prot#: P20749NCBI Gene ID: 602Gene Accssion: NP_005169
Uniprot	P20749
GeneID	602;
SDS-PAGE MW	48kd
Concentration	1mg/ml
Formulation	Rabbit IgG in pH7.4 PBS, 0.05% NaN ₃ , 40% Glycerol.
Storage	Store at -20°C

Application Details

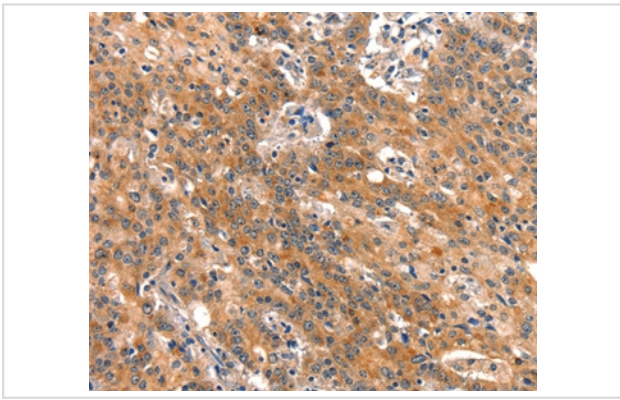
Western blotting: 1:200-1:1000

Immunohistochemistry: 1:25-1:100

Images



Gel: 8%SDS-PAGE
Lysates (from left to right): A549 and hela cell
Amount of lysate: 40ug per lane
Primary antibody: 1/333 dilution
Secondary antibody dilution: 1/8000
Exposure time: 10 minutes



Immunohistochemical analysis of paraffin-embedded Human gastric cancer tissue using #37149 at dilution 1/15.

Background

This gene is a proto-oncogene candidate. It is identified by its translocation into the immunoglobulin alpha-locus in some cases of B-cell leukemia. The protein encoded by this gene contains seven ankyrin repeats, which are most closely related to those found in I kappa B proteins. This protein functions as a transcriptional co-activator that activates through its association with NF-kappa B homodimers. The expression of this gene can be induced by NF-kappa B, which forms a part of the autoregulatory loop that controls the nuclear residence of p50 NF-kappa B.

Note: This product is for in vitro research use only