

BCL6 Antibody

Catalog No: #37150

Orders: order@signalwayantibody.com

Support: tech@signalwayantibody.com

Description

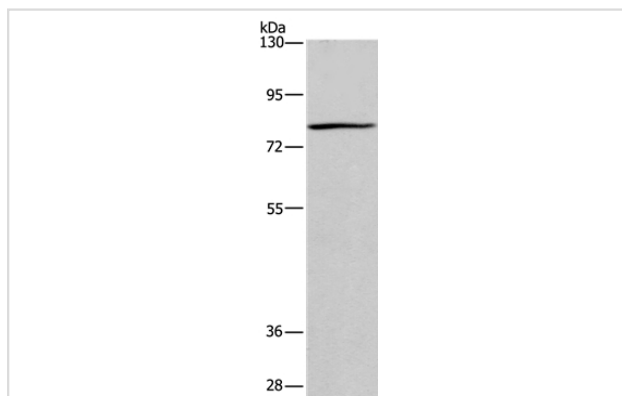
Product Name	BCL6 Antibody
Host Species	Rabbit
Clonality	Polyclonal
Purification	Antigen affinity purification.
Applications	WB IHC
Species Reactivity	Hu
Specificity	The antibody detects endogenous levels of total BCL6 protein.
Immunogen Type	Peptide
Immunogen Description	Synthetic peptide corresponding to residues near the C terminal of human B-cell CLL/lymphoma 6
Target Name	BCL6
Other Names	BCL5; LAZ3; BCL6A; ZNF51; ZBTB27
Accession No.	Swiss-Prot#: P41182NCBI Gene ID: 604Gene Accssion: NP_001697
Uniprot	P41182
GeneID	604;
SDS-PAGE MW	79kd
Concentration	0.7mg/ml
Formulation	Rabbit IgG in pH7.4 PBS, 0.05% NaN ₃ , 40% Glycerol.
Storage	Store at -20°C

Application Details

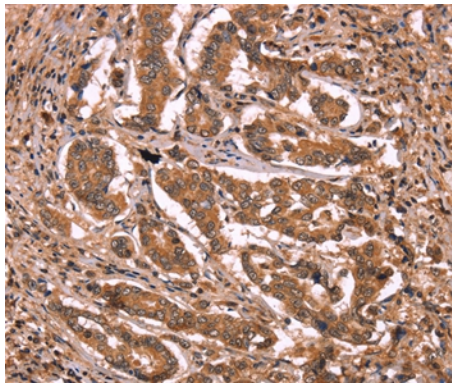
Western blotting: 1:200-1:1000

Immunohistochemistry: 1:25-1:100

Images



Gel: 6%SDS-PAGE
Lysate: 40ug Raji cell
Primary antibody: 1/100 dilution
Secondary antibody dilution: 1/8000
Exposure time: 10 seconds



Immunohistochemical analysis of paraffin-embedded Human breast cancer tissue using #37150 at dilution 1/15.

Background

The protein encoded by this gene is a zinc finger transcription factor and contains an N-terminal POZ domain. This protein acts as a sequence-specific repressor of transcription, and has been shown to modulate the transcription of START-dependent IL-4 responses of B cells. This protein can interact with a variety of POZ-containing proteins that function as transcription corepressors. This gene is found to be frequently translocated and hypermutated in diffuse large-cell lymphoma (DLCL), and may be involved in the pathogenesis of DLCL. Alternatively spliced transcript variants encoding different protein isoforms have been found for this gene

Note: This product is for in vitro research use only