

## Coronin 3 antibody

Catalog No: #22191

Orders: order@signalwayantibody.com

Support: tech@signalwayantibody.com

## Description

Product Name	Coronin 3 antibody
Host Species	Rabbit
Clonality	Polyclonal
Purification	Purified by antigen-affinity chromatography.
Applications	WB IHC IF
Species Reactivity	Hu
Immunogen Type	Peptide
Immunogen Description	Synthetic peptide contain a sequence corresponding to a region within amino acids 411 and 474 of Coronin 3
Target Name	Coronin 3
Accession No.	Swiss-Prot:Q9ULV4Gene ID:23603
Uniprot	Q9ULV4
GeneID	23603;
Concentration	0.4mg/ml
Formulation	Supplied in 1XPBS, 10% Glycerol (pH7.0). 0.01% Thimerosal was added as a preservative.
Storage	Store at -20°C for long term preservation (recommended). Store at 4°C for short term use.

## Application Details

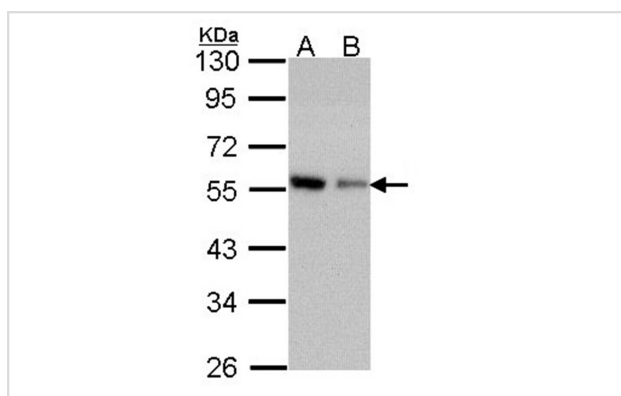
Predicted MW: 53kd

Western blotting: 1:500-1:3000

Immunohistochemistry: 1:100-1:250

Immunofluorescence: 1:100-1:200

## Images



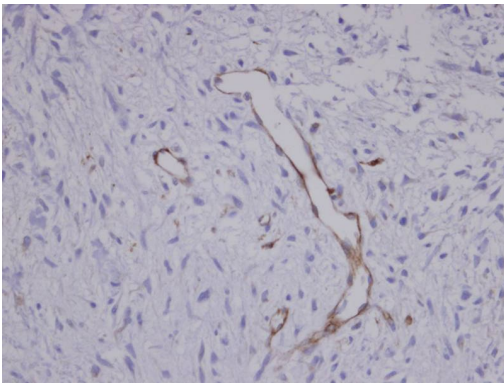
Sample (30 ug of whole cell lysate)

A: A431

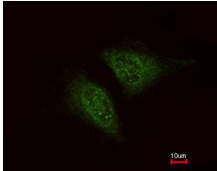
B: H1299

10% SDS PAGE

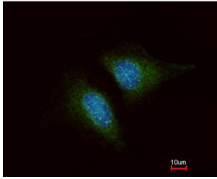
Primary antibody diluted at 1: 1000



Immunohistochemical analysis of paraffin-embedded Sarcoma meta to brain Blood Vessel, using CORO1C antibody at 1: 100 dilution.



Costained with Hoechst 33342



Immunofluorescence analysis of methanol-fixed HeLa, using Coronin 1C antibody at 1: 200 dilution.

## Background

This gene encodes a member of the WD repeat protein family. WD repeats are minimally conserved regions of approximately 40 amino acids typically bracketed by gly-his and trp-asp (GH-WD), which may facilitate formation of heterotrimeric or multiprotein complexes. Members of this family are involved in a variety of cellular processes, including cell cycle progression, signal transduction, apoptosis, and gene regulation. [provided by RefSeq]

Note: This product is for in vitro research use only