

BCR Antibody

Catalog No: #37152

Orders: order@signalwayantibody.comSupport: tech@signalwayantibody.com

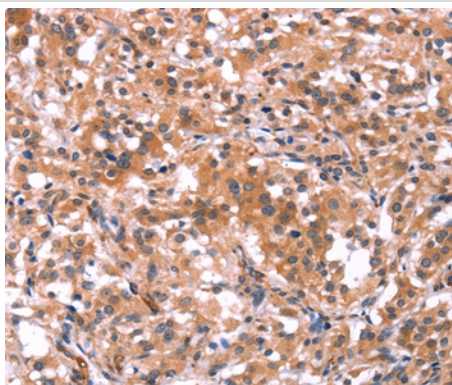
Description

Product Name	BCR Antibody
Host Species	Rabbit
Clonality	Polyclonal
Purification	Antigen affinity purification.
Applications	IHC
Species Reactivity	Hu Ms
Specificity	The antibody detects endogenous levels of total BCR protein.
Immunogen Type	Peptide
Immunogen Description	Synthetic peptide corresponding to a region derived from internal residues of human breakpoint cluster region
Target Name	BCR
Other Names	ALL; CML; PHL; BCR1; D22S11; D22S662
Accession No.	Swiss-Prot#: P11274NCBI Gene ID: 613Gene Accssion: NP_004318
Uniprot	P11274
GeneID	613;
Concentration	1.6mg/ml
Formulation	Rabbit IgG in pH7.4 PBS, 0.05% NaN ₃ , 40% Glycerol.
Storage	Store at -20°C

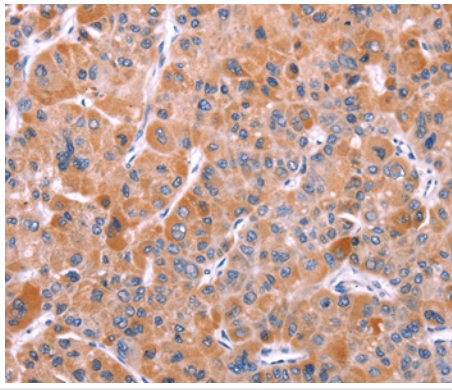
Application Details

Immunohistochemistry: 1:25-1:100

Images



Immunohistochemical analysis of paraffin-embedded Human thyroid cancer tissue using #37152 at dilution 1/15.



Immunohistochemical analysis of paraffin-embedded Human liver cancer tissue using #37152 at dilution 1/15.

Background

A reciprocal translocation between chromosomes 22 and 9 produces the Philadelphia chromosome, which is often found in patients with chronic myelogenous leukemia. The chromosome 22 breakpoint for this translocation is located within the BCR gene. The translocation produces a fusion protein which is encoded by sequence from both BCR and ABL, the gene at the chromosome 9 breakpoint. Although the BCR-ABL fusion protein has been extensively studied, the function of the normal BCR gene product is not clear. The protein has serine/threonine kinase activity and is a GTPase-activating protein for p21^{rac}. Two transcript variants encoding different isoforms have been found for this gene.

Note: This product is for in vitro research use only