

CD226 Antibody

Catalog No: #37161

Orders: order@signalwayantibody.comSupport: tech@signalwayantibody.com

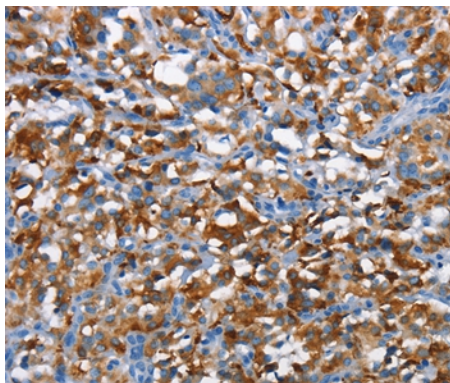
Description

Product Name	CD226 Antibody
Host Species	Rabbit
Clonality	Polyclonal
Purification	Antigen affinity purification.
Applications	IHC
Species Reactivity	Hu
Specificity	The antibody detects endogenous levels of total CD226 protein.
Immunogen Type	Peptide
Immunogen Description	Synthetic peptide corresponding to a region derived from internal residues of human CD226 molecule
Target Name	CD226
Other Names	PTA1; DNAM1; DNAM-1; TLISA1
Accession No.	Swiss-Prot#: Q15762NCBI Gene ID: 10666Gene Accssion: NP_006557
Uniprot	Q15762
GeneID	10666;
Concentration	2.4mg/ml
Formulation	Rabbit IgG in pH7.4 PBS, 0.05% NaN ₃ , 40% Glycerol.
Storage	Store at -20°C

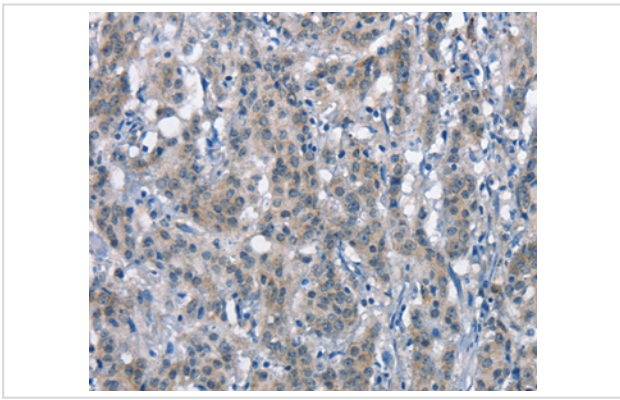
Application Details

Immunohistochemistry: 1:50-1:200

Images



Immunohistochemical analysis of paraffin-embedded Human thyroid cancer tissue using #37161 at dilution 1/60.



Immunohistochemical analysis of paraffin-embedded Human gastric cancer tissue using #37161 at dilution 1/60.

Background

This gene encodes a glycoprotein expressed on the surface of NK cells, platelets, monocytes and a subset of T cells. It is a member of the Ig-superfamily containing 2 Ig-like domains of the V-set. The protein mediates cellular adhesion of platelets and megakaryocytic cells to vascular endothelial cells. The protein also plays a role in megakaryocytic cell maturation.

Note: This product is for in vitro research use only