

## CEACAM6 Antibody

Catalog No: #37163

Orders: [order@signalwayantibody.com](mailto:order@signalwayantibody.com)Support: [tech@signalwayantibody.com](mailto:tech@signalwayantibody.com)

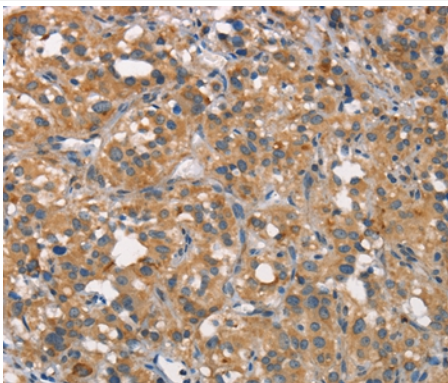
## Description

Product Name	CEACAM6 Antibody
Host Species	Rabbit
Clonality	Polyclonal
Purification	Antigen affinity purification.
Applications	IHC
Species Reactivity	Hu
Specificity	The antibody detects endogenous levels of total CEACAM6 protein.
Immunogen Type	Peptide
Immunogen Description	Synthetic peptide corresponding to a region derived from internal residues of human carcinoembryonic antigen-related cell adhesion molecule 6 (non-specific cross reacting antigen)
Target Name	CEACAM6
Other Names	NCA; CEAL; CD66c
Accession No.	Swiss-Prot#: P40199NCBI Gene ID: 4680Gene Accssion: NP_002474
Uniprot	P40199
GeneID	4680;
Concentration	2.2mg/ml
Formulation	Rabbit IgG in pH7.4 PBS, 0.05% NaN <sub>3</sub> , 40% Glycerol.
Storage	Store at -20°C

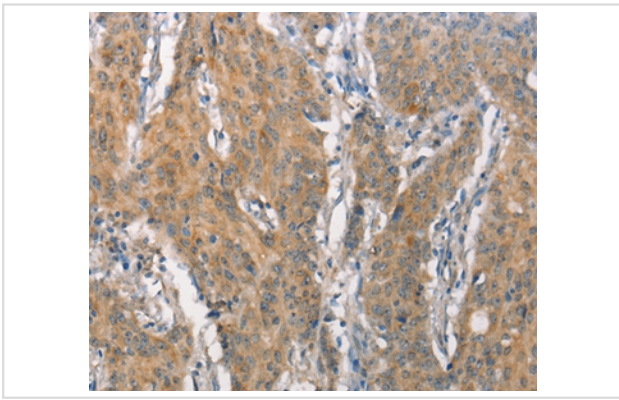
## Application Details

Immunohistochemistry: 1:50-1:200

## Images



Immunohistochemical analysis of paraffin-embedded Human thyroid cancer tissue using #37163 at dilution 1/50.



Immunohistochemical analysis of paraffin-embedded Human gastric cancer tissue using #37163 at dilution 1/50.

## Background

Carcinoembryonic antigen (CEA; MIM 114890) is one of the most widely used tumor markers in serum immunoassay determinations of carcinoma. An apparent lack of absolute cancer specificity for CEA probably results in part from the presence in normal and neoplastic tissues of antigens that share antigenic determinants with the 180-kD form of CEA (Barnett et al., 1988 [PubMed 3220478]). For background information on the CEA family of genes, see CEACAM1 (MIM 109770).

Note: This product is for in vitro research use only