

CDC25B Antibody

Catalog No: #37166

Orders: order@signalwayantibody.comSupport: tech@signalwayantibody.com

Description

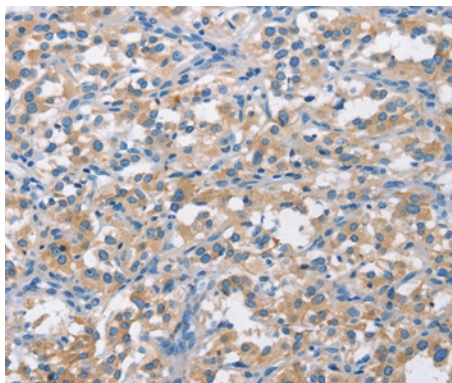
Product Name	CDC25B Antibody
Host Species	Rabbit
Clonality	Polyclonal
Purification	Antigen affinity purification.
Applications	WB IHC
Species Reactivity	Hu Ms
Specificity	The antibody detects endogenous levels of total CDC25B protein.
Immunogen Type	Peptide
Immunogen Description	Synthetic peptide corresponding to a region derived from internal residues of human cell division cycle 25B
Target Name	CDC25B
Other Names	CDC25B; CDC25HU2; M-phase inducer phosphatase 2; MPIP2
Accession No.	Swiss-Prot#: P30305NCBI Gene ID: 994Gene Accssion: NP_004349
Uniprot	P30305
GeneID	994;
SDS-PAGE MW	65kd
Concentration	2mg/ml
Formulation	Rabbit IgG in pH7.4 PBS, 0.05% NaN ₃ , 40% Glycerol.
Storage	Store at -20°C

Application Details

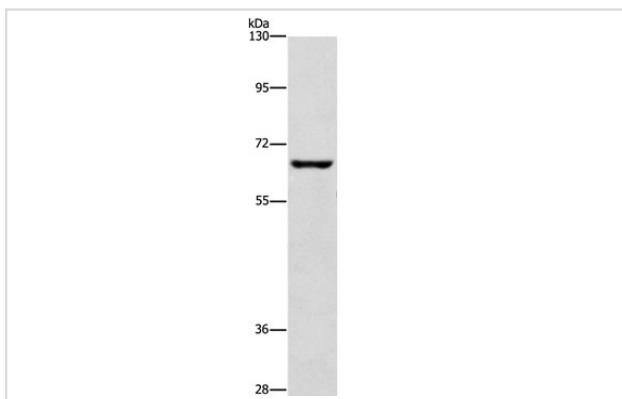
Western blotting: 1:200-1:1000

Immunohistochemistry: 1:50-1:200

Images



Immunohistochemical analysis of paraffin-embedded Human thyroid cancer tissue using #37166 at dilution 1/50.



Gel: 6%SDS-PAGE
Lysates : RAW264.7 cell
Amount of lysate: 40ug per lane
Primary antibody: 1/250 dilution
Secondary antibody dilution: 1/8000
Exposure time: 20 seconds

Background

CDC25B is a member of the CDC25 family of phosphatases. CDC25B activates the cyclin dependent kinase CDC2 by removing two phosphate groups and it is required for entry into mitosis. CDC25B shuttles between the nucleus and the cytoplasm due to nuclear localization and nuclear export signals. The protein is nuclear in the M and G1 phases of the cell cycle and moves to the cytoplasm during S and G2. CDC25B has oncogenic properties, although its role in tumor formation has not been determined. Multiple transcript variants for this gene exist.

Note: This product is for in vitro research use only