

## MUC6 Antibody

Catalog No: #37168

Orders: [order@signalwayantibody.com](mailto:order@signalwayantibody.com)Support: [tech@signalwayantibody.com](mailto:tech@signalwayantibody.com)

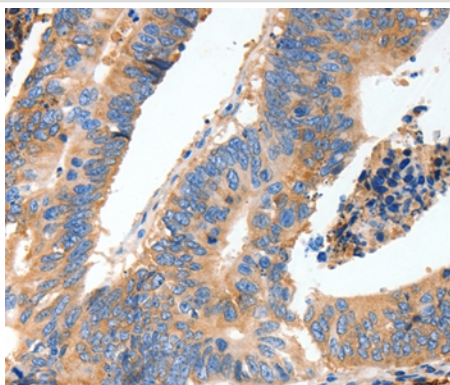
## Description

Product Name	MUC6 Antibody
Host Species	Rabbit
Clonality	Polyclonal
Purification	Antigen affinity purification.
Applications	IHC
Species Reactivity	Hu
Specificity	The antibody detects endogenous levels of total MUC6 protein.
Immunogen Type	Peptide
Immunogen Description	Synthetic peptide corresponding to a region derived from internal residues of human mucin 6, oligomeric mucus/gel-forming
Target Name	MUC6
Other Names	MUC-6
Accession No.	Swiss-Prot#: Q6W4X9 NCBI Gene ID: 4588Gene Accssion: NP_005952
Uniprot	Q6W4X9
GeneID	4588;
Concentration	1.5mg/ml
Formulation	Rabbit IgG in pH7.4 PBS, 0.05% NaN <sub>3</sub> , 40% Glycerol.
Storage	Store at -20°C

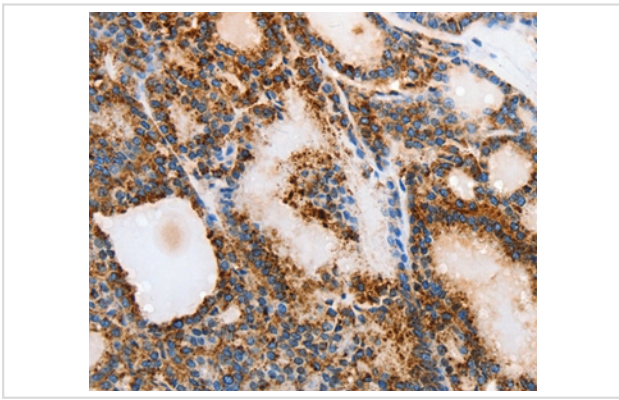
## Application Details

Immunohistochemistry: 1:50-1:200

## Images



Immunohistochemical analysis of paraffin-embedded Human thyroid cancer tissue using #37168 at dilution 1/40.



Immunohistochemical analysis of paraffin-embedded Human colon tissue using #37168 at dilution 1/40.

## Background

The MUC6 gene encodes gastric mucin, a secreted glycoprotein that plays an essential role in epithelial cytoprotection from acid, proteases, pathogenic microorganisms, and mechanical trauma in the gastrointestinal tract. May provide a mechanism for modulation of the composition of the protective mucus layer related to acid secretion or the presence of bacteria and noxious agents in the lumen. Plays an important role in the cytoprotection of epithelial surfaces and are used as tumor markers in a variety of cancers. May play a role in epithelial organogenesis.

Note: This product is for in vitro research use only