

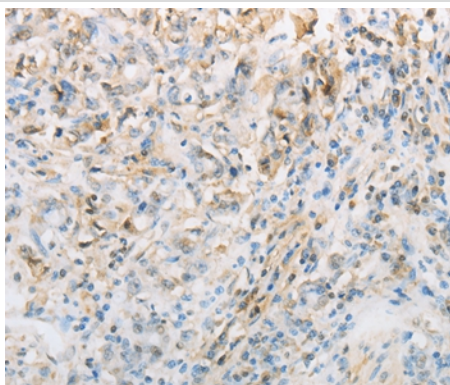
Description

| | |
|-----------------------|---|
| Product Name | NPPC Antibody |
| Host Species | Rabbit |
| Clonality | Polyclonal |
| Purification | Antigen affinity purification. |
| Applications | IHC Elisa |
| Species Reactivity | Hu Ms Rt |
| Specificity | The antibody detects endogenous levels of total NPPC protein. |
| Immunogen Type | Peptide |
| Immunogen Description | Synthetic peptide of human NPPC |
| Target Name | NPPC |
| Other Names | CNP; CNP2 |
| Accession No. | Swiss-Prot#: P23582 NCBI Gene ID: 4880Gene Accssion: NP_077720 |
| Uniprot | P23582 |
| GeneID | 4880; |
| Concentration | 0.6mg/ml |
| Formulation | Rabbit IgG in pH7.4 PBS, 0.05% NaN ₃ , 40% Glycerol. |
| Storage | Store at -20°C |

Application Details

Immunohistochemistry: 1:50-1:200

Images



Immunohistochemical analysis of paraffin-embedded Human gastric cancer tissue using #37196 at dilution 1/70.

Background

This gene encodes a preproprotein that is proteolytically processed to generate multiple protein products. These products include the cardiac natriuretic peptides CNP-53, CNP-29 and CNP-22, which belong to the natriuretic family of peptides. The encoded peptides exhibit vasorelaxation activity in laboratory animals and elevated levels of CNP-22 have been observed in the plasma of chronic heart failure patients.

Note: This product is for in vitro research use only