

LPPR5 Antibody

Catalog No: #37207

Orders: order@signalwayantibody.com

Support: tech@signalwayantibody.com

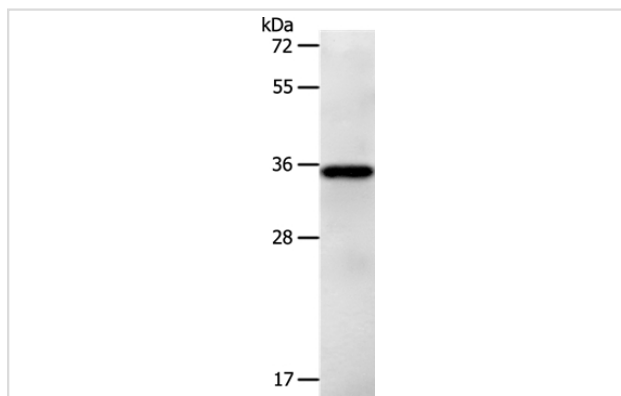
Description

Product Name	LPPR5 Antibody
Host Species	Rabbit
Clonality	Polyclonal
Purification	Antigen affinity purification.
Applications	WB
Species Reactivity	Hu Ms
Specificity	The antibody detects endogenous levels of total LPPR5 protein.
Immunogen Type	Peptide
Immunogen Description	Synthetic peptide corresponding to a region derived from internal residues of human Lipid phosphate phosphatase-related protein type 5
Target Name	LPPR5
Other Names	PAP2; PRG5; PAP2D
Accession No.	Swiss-Prot#: Q32ZL2NCBI Gene ID: 163404Gene Accssion: NP_001032394
Uniprot	Q32ZL2
GeneID	163404;
SDS-PAGE MW	35kd
Concentration	2.4mg/ml
Formulation	Rabbit IgG in pH7.4 PBS, 0.05% NaN ₃ , 40% Glycerol.
Storage	Store at -20°C

Application Details

Western blotting: 1:1000-1:5000

Images



Gel: 10%SDS-PAGE
 Lysate: 40ug Jurkat cell
 Primary antibody: 1/1200 dilution
 Secondary antibody dilution: 1/8000
 Exposure time: 30 seconds

Background

The protein encoded by this gene is a type 2 member of the phosphatidic acid phosphatase (PAP) family. All type 2 members of this protein family

contain 6 transmembrane regions, and a consensus N-glycosylation site. PAPs convert phosphatidic acid to diacylglycerol, and function in de novo synthesis of glycerolipids as well as in receptor-activated signal transduction mediated by phospholipase D. Alternate transcriptional splice variants, encoding different isoforms, have been characterized.

Note: This product is for in vitro research use only