

PDCD2 Antibody

Catalog No: #37210

Orders: order@signalwayantibody.comSupport: tech@signalwayantibody.com

Description

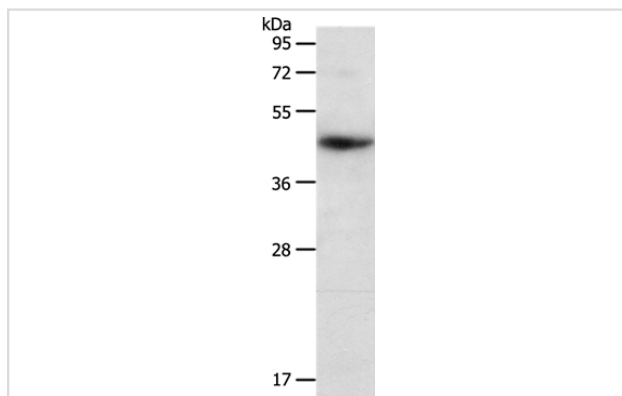
Product Name	PDCD2 Antibody
Host Species	Rabbit
Clonality	Polyclonal
Purification	Antigen affinity purification.
Applications	WB IHC
Species Reactivity	Hu Ms
Specificity	The antibody detects endogenous levels of total PDCD2 protein.
Immunogen Type	Peptide
Immunogen Description	Synthetic peptide corresponding to residues near the C terminal of human Programmed cell death 2
Target Name	PDCD2
Other Names	RP8; ZMYND7
Accession No.	Swiss-Prot#: Q16342NCBI Gene ID: 5134Gene Accssion: NP_002589
Uniprot	Q16342
GeneID	5134;
SDS-PAGE MW	39kd
Concentration	0.4mg/ml
Formulation	Rabbit IgG in pH7.4 PBS, 0.05% NaN ₃ , 40% Glycerol.
Storage	Store at -20°C

Application Details

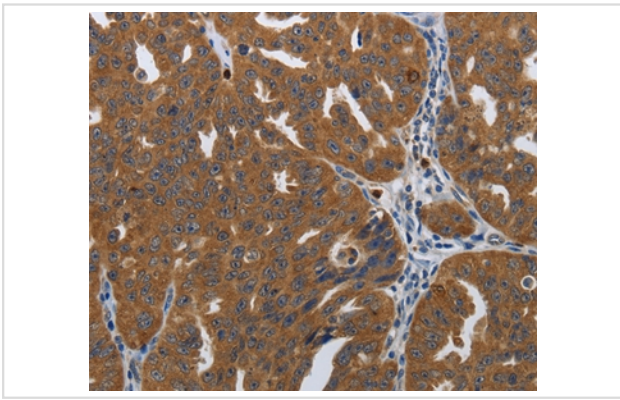
Western blotting: 1:200-1:1000

Immunohistochemistry: 1:25-1:100

Images



Gel: 10%SDS-PAGE
Lysate: 40ug Hela cell
Primary antibody: 1/200 dilution
Secondary antibody dilution: 1/8000
Exposure time: 20 seconds



Immunohistochemical analysis of paraffin-embedded Human ovarian cancer tissue using #37210 at dilution 1/10.

Background

This gene encodes a nuclear protein expressed in a variety of tissues. Expression of this gene has been shown to be repressed by B-cell CLL/lymphoma 6 (BCL6), a transcriptional repressor required for lymph node germinal center development, suggesting that BCL6 regulates apoptosis by its effects on this protein. Alternative splicing results in multiple transcript variants and pseudogenes have been identified on chromosomes 9 and 12.

Note: This product is for in vitro research use only