

PODXL Antibody

Catalog No: #37211

Orders: order@signalwayantibody.comSupport: tech@signalwayantibody.com

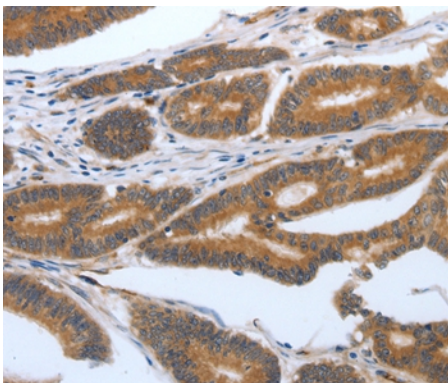
Description

Product Name	PODXL Antibody
Host Species	Rabbit
Clonality	Polyclonal
Purification	Antigen affinity purification.
Applications	IHC
Species Reactivity	Hu
Specificity	The antibody detects endogenous levels of total PODXL protein.
Immunogen Type	Peptide
Immunogen Description	Synthetic peptide corresponding to a region derived from internal residues of human Podocalyxin-like
Target Name	PODXL
Other Names	PC; PCLP; Gp200; PCLP-1
Accession No.	Swiss-Prot#: O00592NCBI Gene ID: 5420Gene Accssion: NP_005388
Uniprot	O00592
GeneID	5420;
Concentration	0.8mg/ml
Formulation	Rabbit IgG in pH7.4 PBS, 0.05% NaN ₃ , 40% Glycerol.
Storage	Store at -20°C

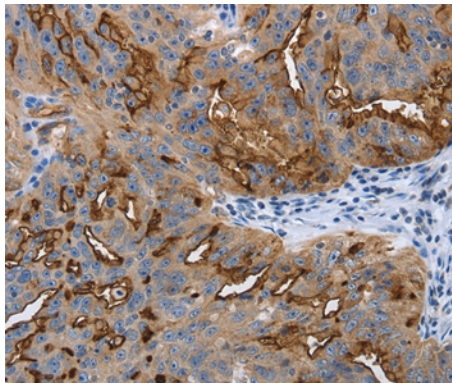
Application Details

Immunohistochemistry: 1:25-1:100

Images



Immunohistochemical analysis of paraffin-embedded Human colon cancer tissue using #37211 at dilution 1/25.



Immunohistochemical analysis of paraffin-embedded Human ovarian cancer tissue using #37211 at dilution 1/25.

Background

This gene encodes a member of the sialomucin protein family. The encoded protein was originally identified as an important component of glomerular podocytes. Podocytes are highly differentiated epithelial cells with interdigitating foot processes covering the outer aspect of the glomerular basement membrane. Other biological activities of the encoded protein include: binding in a membrane protein complex with Na⁺/H⁺ exchanger regulatory factor to intracellular cytoskeletal elements, playing a role in hematopoietic cell differentiation, and being expressed in vascular endothelium cells and binding to L-selectin.

Note: This product is for in vitro research use only