

PDCD1 Antibody

Catalog No: #37212

Orders: order@signalwayantibody.comSupport: tech@signalwayantibody.com

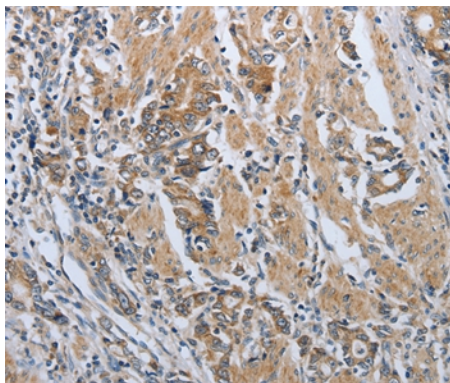
Description

Product Name	PDCD1 Antibody
Host Species	Rabbit
Clonality	Polyclonal
Purification	Antigen affinity purification.
Applications	IHC
Species Reactivity	Hu
Specificity	The antibody detects endogenous levels of total PDCD1 protein.
Immunogen Type	Peptide
Immunogen Description	Synthetic peptide corresponding to residues near the C terminal of human Programmed cell death 1
Target Name	PDCD1
Other Names	PD1; PD-1; CD279; SLEB2; hPD-1; hPD-I
Accession No.	Swiss-Prot#: Q15116NCBI Gene ID: 5133Gene Accssion: NP_005009
Uniprot	Q15116
GeneID	5133;
Concentration	1.6mg/ml
Formulation	Rabbit IgG in pH7.4 PBS, 0.05% NaN ₃ , 40% Glycerol.
Storage	Store at -20°C

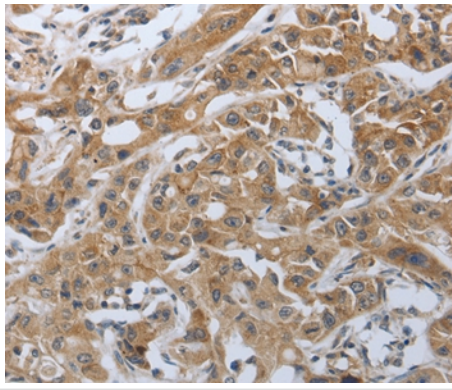
Application Details

Immunohistochemistry: 1:50-1:200

Images



Immunohistochemical analysis of paraffin-embedded Human gastric cancer tissue using #37212 at dilution 1/50.



Immunohistochemical analysis of paraffin-embedded Human lung cancer tissue using #37212 at dilution 1/50.

Background

This gene encodes a cell surface membrane protein of the immunoglobulin superfamily. This protein is expressed in pro-B-cells and is thought to play a role in their differentiation. In mice, expression of this gene is induced in the thymus when anti-CD3 antibodies are injected and large numbers of thymocytes undergo apoptosis. Mice deficient for this gene bred on a BALB/c background developed dilated cardiomyopathy and died from congestive heart failure. These studies suggest that this gene product may also be important in T cell function and contribute to the prevention of autoimmune diseases.

Note: This product is for in vitro research use only