

PRKAR1B Antibody

Catalog No: #37215

Orders: order@signalwayantibody.com

Support: tech@signalwayantibody.com

Description

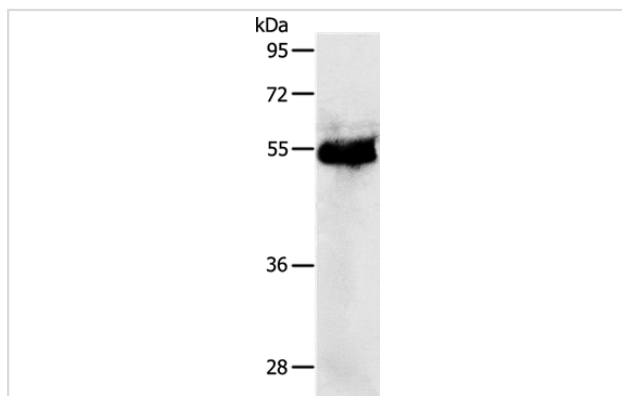
Product Name	PRKAR1B Antibody
Host Species	Rabbit
Clonality	Polyclonal
Purification	Antigen affinity purification.
Applications	WB IHC
Species Reactivity	Hu Ms Rt
Specificity	The antibody detects endogenous levels of total PRKAR1B protein.
Immunogen Type	Peptide
Immunogen Description	Synthetic peptide corresponding to a region derived from internal residues of human Protein kinase, cAMP-dependent, regulatory, type I, beta
Target Name	PRKAR1B
Other Names	PRKAR1
Accession No.	Swiss-Prot#: P31321NCBI Gene ID: 5575Gene Accssion: NP_001158230
Uniprot	P31321
GeneID	5575;
SDS-PAGE MW	43kd
Concentration	2.4mg/ml
Formulation	Rabbit IgG in pH7.4 PBS, 0.05% NaN ₃ , 40% Glycerol.
Storage	Store at -20°C

Application Details

Western blotting: 1:1000-1:5000

Immunohistochemistry: 1:50-1:200

Images



Gel: 10%SDS-PAGE

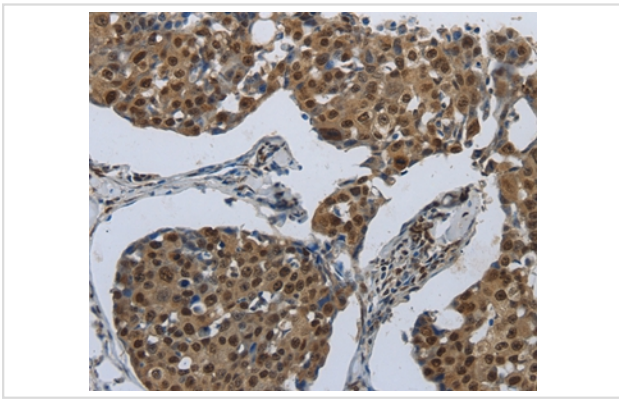
Lysates (from left to right): Human colon cancer tissue

Amount of lysate: 40ug per lane

Primary antibody: 1/1200 dilution

Secondary antibody dilution: 1/8000

Exposure time: 20 seconds



Immunohistochemical analysis of paraffin-embedded Human breast cancer tissue using #37215 at dilution 1/70.

Background

Cyclic AMP-dependent protein kinase A (PKA) is an essential enzyme in the signaling pathway of the second messenger cAMP. Through phosphorylation of target proteins, PKA controls many biochemical events in the cell including regulation of metabolism, ion transport, and gene transcription. The PKA holoenzyme is composed of 2 regulatory and 2 catalytic subunits and dissociates from the regulatory subunits upon binding of cAMP.

Note: This product is for in vitro research use only