

## PMS2 Antibody

Catalog No: #37216

Orders: [order@signalwayantibody.com](mailto:order@signalwayantibody.com)Support: [tech@signalwayantibody.com](mailto:tech@signalwayantibody.com)

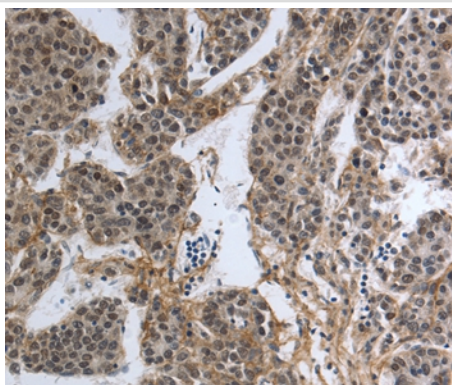
## Description

Product Name	PMS2 Antibody
Host Species	Rabbit
Clonality	Polyclonal
Purification	Antigen affinity purification.
Applications	IHC
Species Reactivity	Hu
Specificity	The antibody detects endogenous levels of total PMS2 protein.
Immunogen Type	Peptide
Immunogen Description	Synthetic peptide corresponding to a region derived from internal residues of human PMS2 postmeiotic segregation increased 2 ( <i>S. cerevisiae</i> )
Target Name	PMS2
Other Names	PMSL2; HNPCC4; PMS2CL
Accession No.	Swiss-Prot#: P54278NCBI Gene ID: 5395Gene Accssion: NP_000526
Uniprot	P54278
GeneID	5395;
Concentration	1.1mg/ml
Formulation	Rabbit IgG in pH7.4 PBS, 0.05% NaN <sub>3</sub> , 40% Glycerol.
Storage	Store at -20°C

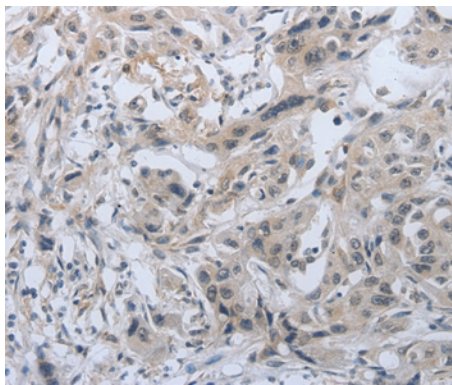
## Application Details

Immunohistochemistry: 1:25-1:100

## Images



Immunohistochemical analysis of paraffin-embedded Human liver cancer tissue using #37216 at dilution 1/30.



Immunohistochemical analysis of paraffin-embedded Human lung cancer tissue using #37216 at dilution 1/30.

## Background

This gene is one of the PMS2 gene family members found in clusters on chromosome 7. The product of this gene is involved in DNA mismatch repair. It forms a heterodimer with MLH1 and this complex interacts with other complexes bound to mismatched bases. Mutations in this gene are associated with hereditary nonpolyposis colorectal cancer, Turcot syndrome, and are a cause of supratentorial primitive neuroectodermal tumors. Alternatively spliced transcript variants have been observed for this gene.

Note: This product is for in vitro research use only