

SCN5A Antibody

Catalog No: #37233

Orders: order@signalwayantibody.comSupport: tech@signalwayantibody.com

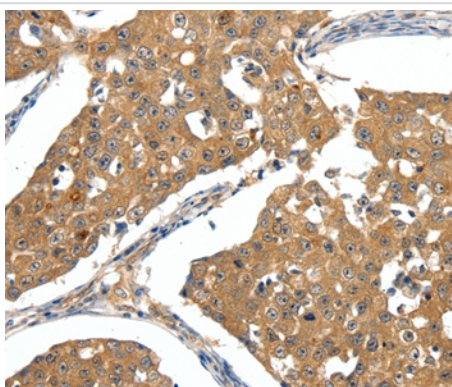
Description

Product Name	SCN5A Antibody
Host Species	Rabbit
Clonality	Polyclonal
Purification	Antigen affinity purification.
Applications	IHC
Species Reactivity	Hu Ms Rt
Specificity	The antibody detects endogenous levels of total SCN5A protein.
Immunogen Type	Peptide
Immunogen Description	Synthetic peptide corresponding to a region derived from internal residues of human sodium channel, voltage-gated, type V, alpha subunit
Target Name	SCN5A
Other Names	HB1; HB2; HH1; IVF; VF1; HBBD; ICCD; LQT3; SSS1; CDCD2; CMD1E; CMPD2; PFHB1; Nav1.5
Accession No.	Swiss-Prot#: Q14524NCBI Gene ID: 6331Gene Accssion: NP_932173
Uniprot	Q14524
GeneID	6331;
Concentration	1.1mg/ml
Formulation	Rabbit IgG in pH7.4 PBS, 0.05% NaN ₃ , 40% Glycerol.
Storage	Store at -20°C

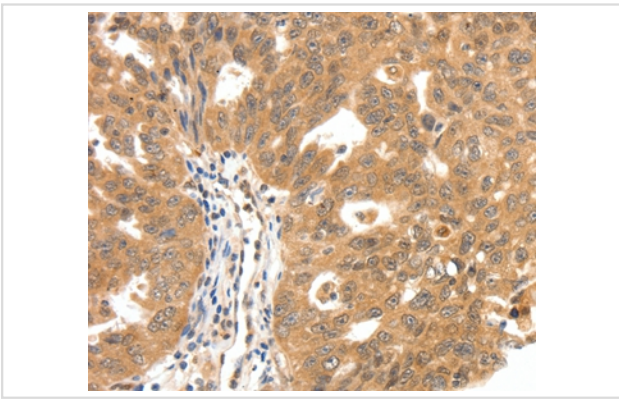
Application Details

Immunohistochemistry: 1:25-1:100

Images



Immunohistochemical analysis of paraffin-embedded Human breast cancer tissue using #37233 at dilution 1/30.



Immunohistochemical analysis of paraffin-embedded Human ovarian cancer tissue using #37233 at dilution 1/30.

Background

The protein encoded by this gene is an integral membrane protein and tetrodotoxin-resistant voltage-gated sodium channel subunit. This protein is found primarily in cardiac muscle and is responsible for the initial upstroke of the action potential in an electrocardiogram. Defects in this gene are a cause of long QT syndrome type 3 (LQT3), an autosomal dominant cardiac disease. Alternative splicing results in several transcript variants encoding different isoforms.

Note: This product is for in vitro research use only