

CXCL12 Antibody

Catalog No: #37236

Orders: order@signalwayantibody.comSupport: tech@signalwayantibody.com

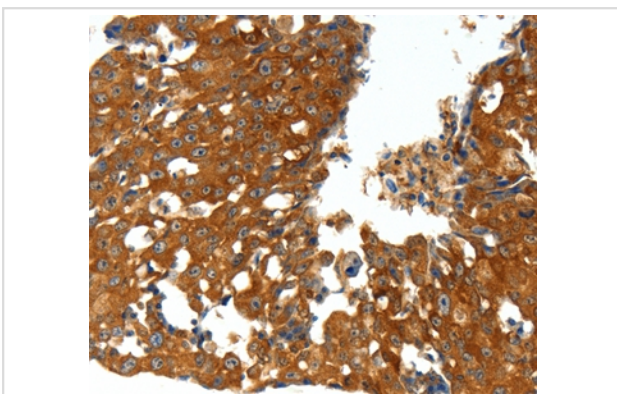
Description

Product Name	CXCL12 Antibody
Host Species	Rabbit
Clonality	Polyclonal
Purification	Antigen affinity purification.
Applications	IHC
Species Reactivity	Hu
Specificity	The antibody detects endogenous levels of total CXCL12 protein.
Immunogen Type	Peptide
Immunogen Description	Synthetic peptide corresponding to a region derived from internal residues of human chemokine (C-X-C motif) ligand 12
Target Name	CXCL12
Other Names	IRH; PBSF; SDF1; TLSF; SDF1A; SDF1B; TPAR1; SCYB12
Accession No.	Swiss-Prot#: P48061NCBI Gene ID: 6387Gene Accssion: NP_000600
Uniprot	P48061
GeneID	6387;
Concentration	0.7mg/ml
Formulation	Rabbit IgG in pH7.4 PBS, 0.05% NaN ₃ , 40% Glycerol.
Storage	Store at -20°C

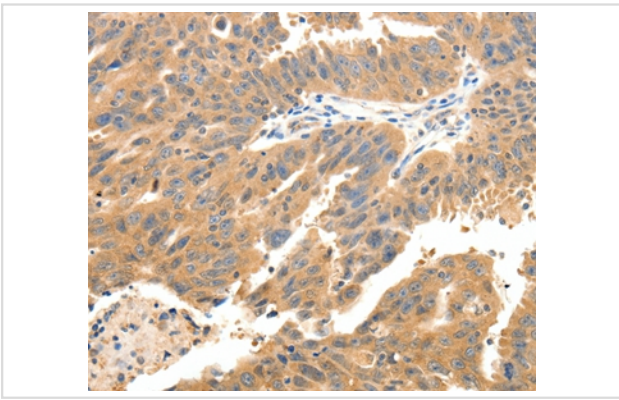
Application Details

Immunohistochemistry: 1:25-1:100

Images



Immunohistochemical analysis of paraffin-embedded Human breast cancer tissue using #37236 at dilution 1/20.



Immunohistochemical analysis of paraffin-embedded Human ovarian cancer tissue using #37236 at dilution 1/20.

Background

This gene encodes a stromal cell-derived alpha chemokine member of the intercrine family. This gene product and its receptor CXCR4 can activate lymphocytes and have been implicated in the metastasis of some cancers such as breast cancer. Mutations in this gene are associated with resistance to human immunodeficiency virus type 1 infections. Multiple transcript variants encoding different isoforms have been found for this gene.

Note: This product is for in vitro research use only