

SCT Antibody

Catalog No: #37237

Orders: order@signalwayantibody.comSupport: tech@signalwayantibody.com

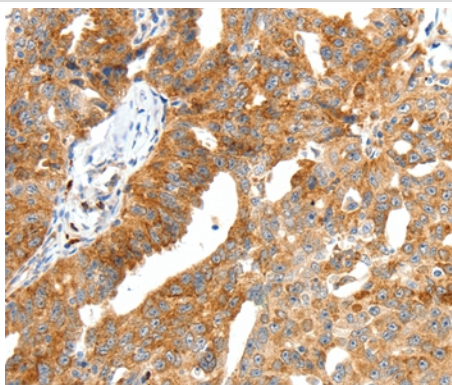
Description

Product Name	SCT Antibody
Host Species	Rabbit
Clonality	Polyclonal
Purification	Antigen affinity purification.
Applications	IHC
Species Reactivity	Hu
Specificity	The antibody detects endogenous levels of total SCT protein.
Immunogen Type	Peptide
Immunogen Description	Synthetic peptide corresponding to a region derived from internal residues of human secretin
Target Name	SCT
Other Names	Secretin
Accession No.	Swiss-Prot#: P09683NCBI Gene ID: 6343Gene Accssion: NP_068739.1
Uniprot	P09683
GeneID	6343;
Concentration	1.3mg/ml
Formulation	Rabbit IgG in pH7.4 PBS, 0.05% NaN ₃ , 40% Glycerol.
Storage	Store at -20°C

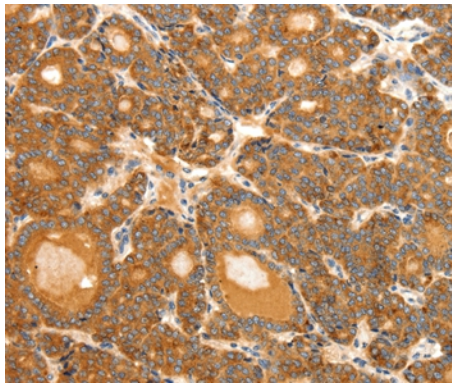
Application Details

Immunohistochemistry: 1:50-1:200

Images



Immunohistochemical analysis of paraffin-embedded Human thyroid cancer tissue using #37237 at dilution 1/40.



Immunohistochemical analysis of paraffin-embedded Human ovarian cancer tissue using #37237 at dilution 1/40.

Background

Secretin belongs to the glucagon family. This protein is an endocrine hormone and its major site of production is the endocrine S cells located in the proximal small intestinal mucosa. The release of active secretin is stimulated by either fatty acids or an acidic pH in the duodenum. This hormone stimulates the secretion of bicarbonate-rich pancreatic fluids and has also been shown to regulate the growth and development of the stomach, small intestine, and pancreas. Secretin deficiency has been implicated in autistic syndrome, suggesting that the hormone could have a neuroendocrine function in addition to its role in digestion.

Note: This product is for in vitro research use only