

SEL1L Antibody

Catalog No: #37238

Orders: order@signalwayantibody.comSupport: tech@signalwayantibody.com

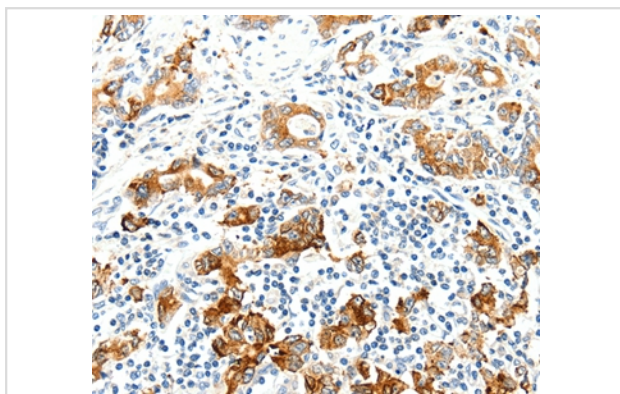
Description

Product Name	SEL1L Antibody
Host Species	Rabbit
Clonality	Polyclonal
Purification	Antigen affinity purification.
Applications	IHC
Species Reactivity	Hu
Specificity	The antibody detects endogenous levels of total SEL1L protein.
Immunogen Type	Peptide
Immunogen Description	Synthetic peptide corresponding to a region derived from internal residues of human sel-1 suppressor of lin-12-like (<i>C. elegans</i>)
Target Name	SEL1L
Other Names	SEL1L1; PRO1063; SEL1-LIKE
Accession No.	Swiss-Prot#: Q9UBV2NCBI Gene ID: 6400Gene Accssion: NP_005056.3
Uniprot	Q9UBV2
GeneID	6400;
Concentration	0.8mg/ml
Formulation	Rabbit IgG in pH7.4 PBS, 0.05% NaN ₃ , 40% Glycerol.
Storage	Store at -20°C

Application Details

Immunohistochemistry: 1:25-1:100

Images



Immunohistochemical analysis of paraffin-embedded Human gastric cancer tissue using #37238 at dilution 1/25.

Background

The protein encoded by this gene is part of a protein complex required for the retrotranslocation or dislocation of misfolded proteins from the endoplasmic reticulum lumen to the cytosol, where they are degraded by the proteasome in a ubiquitin-dependent manner. Alternatively spliced

transcript variants encoding different isoforms have been found for this gene.

Note: This product is for in vitro research use only