

SEMA3D Antibody

Catalog No: #37239

Orders: order@signalwayantibody.comSupport: tech@signalwayantibody.com

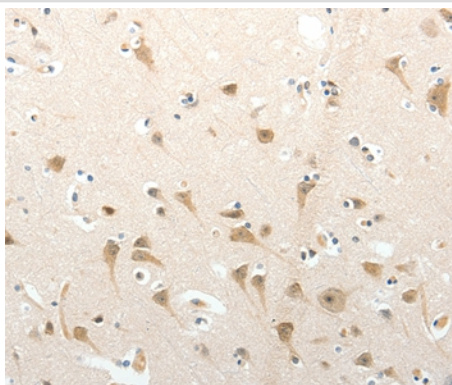
Description

Product Name	SEMA3D Antibody
Host Species	Rabbit
Clonality	Polyclonal
Purification	Antigen affinity purification.
Applications	IHC
Species Reactivity	Hu Ms
Specificity	The antibody detects endogenous levels of total SEMA3D protein.
Immunogen Type	Peptide
Immunogen Description	Synthetic peptide corresponding to a region derived from internal residues of human sema domain, immunoglobulin domain (Ig), short basic domain, secreted, (semaphorin) 3D
Target Name	SEMA3D
Other Names	coll-2; Sema-Z2
Accession No.	Swiss-Prot#: O95025NCBI Gene ID: 223117Gene Accssion: NP_689967.2
Uniprot	O95025
GeneID	223117;
Concentration	1.6mg/ml
Formulation	Rabbit IgG in pH7.4 PBS, 0.05% NaN ₃ , 40% Glycerol.
Storage	Store at -20°C

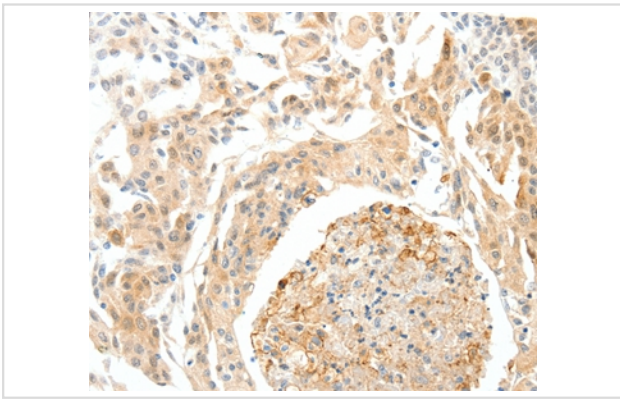
Application Details

Immunohistochemistry: 1:50-1:200

Images



Immunohistochemical analysis of paraffin-embedded Human brain tissue using #37239 at dilution 1/50.



Immunohistochemical analysis of paraffin-embedded Human cervical cancer tissue using #37239 at dilution 1/50.

Background

This gene belongs to the semaphorin family. It induces the collapse and paralysis of neuronal growth cones. It could potentially act as repulsive cues toward specific neuronal populations. Strong binding to neuropilin is mediated by the carboxy third of the protein.

Note: This product is for in vitro research use only