

SLC5A1 Antibody

Catalog No: #37240

Orders: order@signalwayantibody.com

Support: tech@signalwayantibody.com

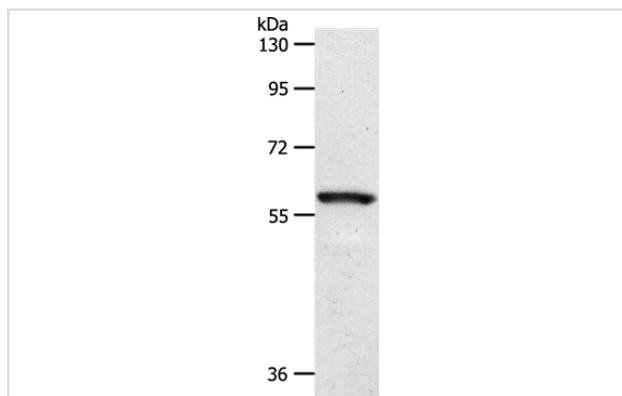
Description

Product Name	SLC5A1 Antibody
Host Species	Rabbit
Clonality	Polyclonal
Purification	Antigen affinity purification.
Applications	WB
Species Reactivity	Hu Ms
Specificity	The antibody detects endogenous levels of total SLC5A1 protein.
Immunogen Type	Peptide
Immunogen Description	Synthetic peptide corresponding to a region derived from internal residues of human solute carrier family 5 (sodium/glucose cotransporter), member 1
Target Name	SLC5A1
Other Names	NAGT; SGLT1; D22S675
Accession No.	Swiss-Prot#: P13866NCBI Gene ID: 6523Gene Accssion: NP_001243243
Uniprot	P13866
GeneID	6523;
SDS-PAGE MW	60kd
Concentration	2.2mg/ml
Formulation	Rabbit IgG in pH7.4 PBS, 0.05% NaN ₃ , 40% Glycerol.
Storage	Store at -20°C

Application Details

Western blotting: 1:1000-1:5000

Images



Gel: 10%SDS-PAGE
 Lysates (from left to right): Mouse eye tissue
 Amount of lysate: 40ug per lane
 Primary antibody: 1/1100 dilution
 Secondary antibody dilution: 1/8000
 Exposure time: 2 seconds

Background

This gene encodes a member of the sodium-dependent glucose transporter (SGLT) family. The encoded integral membrane protein is the primary

mediator of dietary glucose and galactose uptake from the intestinal lumen. Mutations in this gene have been associated with glucose-galactose malabsorption. Multiple transcript variants encoding different isoforms have been found for this gene.

Note: This product is for in vitro research use only