

## SLC24A1 Antibody

Catalog No: #37245

Orders: order@signalwayantibody.com

Support: tech@signalwayantibody.com

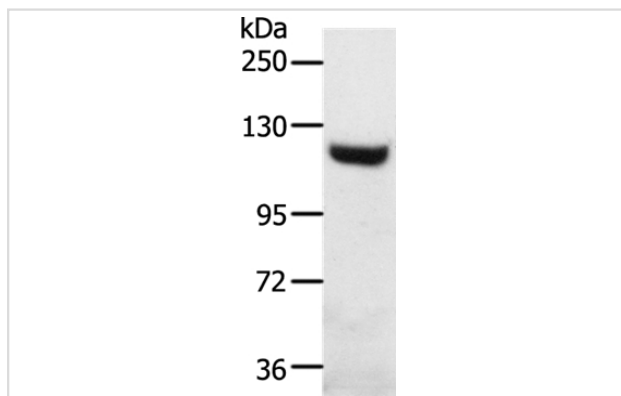
## Description

Product Name	SLC24A1 Antibody
Host Species	Rabbit
Clonality	Polyclonal
Purification	Antigen affinity purification.
Applications	WB
Species Reactivity	Hu Ms Rt
Specificity	The antibody detects endogenous levels of total SLC24A1 protein.
Immunogen Type	Peptide
Immunogen Description	Synthetic peptide corresponding to a region derived from internal residues of human Solute carrier family 24 (sodium/potassium/calcium exchanger), member 1
Target Name	SLC24A1
Other Names	NCKX; RODX; NCKX1; CSNB1D; HsT17412
Accession No.	Swiss-Prot#: O60721NCBI Gene ID: 9187Gene Accssion: NP_004718
Uniprot	O60721
GeneID	9187;
SDS-PAGE MW	121kd
Concentration	2.1mg/ml
Formulation	Rabbit IgG in pH7.4 PBS, 0.05% NaN <sub>3</sub> , 40% Glycerol.
Storage	Store at -20°C

## Application Details

Western blotting: 1:200-1:1000

## Images



Gel: 8%SDS-PAGE  
 Lysates (from left to right): Mouse heart tissue  
 Amount of lysate: 40ug per lane  
 Primary antibody: 1/1000 dilution  
 Secondary antibody dilution: 1/8000  
 Exposure time: 30 minutes

## Background

This gene encodes a member of the potassium-dependent sodium/calcium exchanger protein family. The encoded protein plays an important role in

sodium/calcium exchange in retinal rod and cone photoreceptors by mediating the extrusion of one calcium ion and one potassium ion in exchange for four sodium ions. Mutations in this gene may play a role in congenital stationary night blindness. Alternatively spliced transcript variants encoding multiple isoforms have been observed for this gene.

---

Note: This product is for in vitro research use only