

SSTR2 Antibody

Catalog No: #37257

Orders: order@signalwayantibody.com

Support: tech@signalwayantibody.com

Description

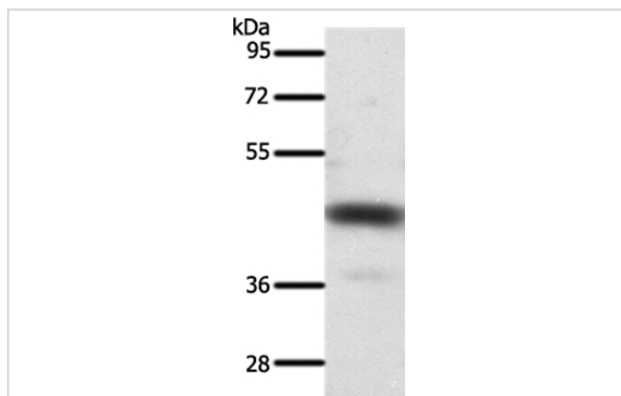
Product Name	SSTR2 Antibody
Host Species	Rabbit
Clonality	Polyclonal
Purification	Antigen affinity purification.
Applications	WB IHC
Species Reactivity	Hu Ms Rt
Specificity	The antibody detects endogenous levels of total SSTR2 protein.
Immunogen Type	Peptide
Immunogen Description	Synthetic peptide corresponding to residues near the C terminal of human somatostatin receptor 2
Target Name	SSTR2
Other Names	SRIF-1; SS-2-R; SS2-R; SS2R; SSR2; SST2A; SSTR2
Accession No.	Swiss-Prot#: P30874NCBI Gene ID: 6752Gene Accssion: NP_001041.1
Uniprot	P30874
GeneID	6752;
SDS-PAGE MW	41kd
Concentration	0.9mg/ml
Formulation	Rabbit IgG in pH7.4 PBS, 0.05% NaN ₃ , 40% Glycerol.
Storage	Store at -20°C

Application Details

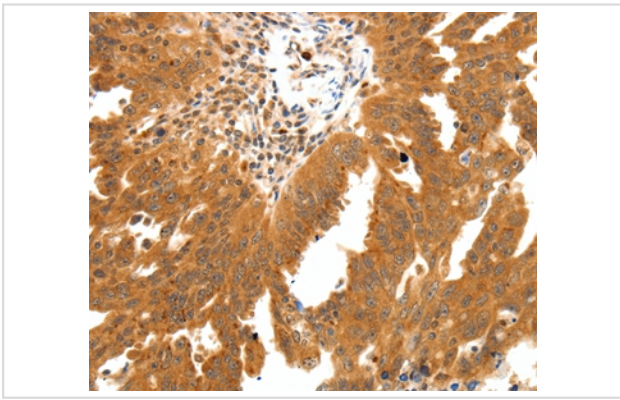
Western blotting: 1:200-1:1000

Immunohistochemistry: 1:50-1:200

Images



Gel: 10%SDS-PAGE
Lysates (from left to right): Mouse thymus tissue
Amount of lysate: 60ug per lane
Primary antibody: 1/350 dilution
Secondary antibody dilution: 1/8000
Exposure time: 1 minute



Immunohistochemical analysis of paraffin-embedded Human ovarian cancer tissue using #37257 at dilution 1/30.

Background

Somatostatin acts at many sites to inhibit the release of many hormones and other secretory proteins. The biologic effects of somatostatin are probably mediated by a family of G protein-coupled receptors that are expressed in a tissue-specific manner. SSTR2 is a member of the superfamily of receptors having seven transmembrane segments and is expressed in highest levels in cerebrum and kidney.

Note: This product is for in vitro research use only