

SSTR3 Antibody

Catalog No: #37258

Orders: order@signalwayantibody.comSupport: tech@signalwayantibody.com

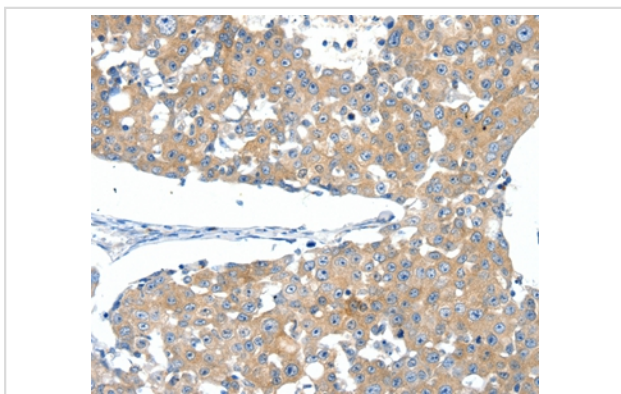
Description

Product Name	SSTR3 Antibody
Host Species	Rabbit
Clonality	Polyclonal
Purification	Antigen affinity purification.
Applications	IHC
Species Reactivity	Hu
Specificity	The antibody detects endogenous levels of total SSTR3 protein.
Immunogen Type	Peptide
Immunogen Description	Synthetic peptide corresponding to residues near the C terminal of human somatostatin receptor 3
Target Name	SSTR3
Other Names	SS-3-R; SS3-R; SS3R; SSR-28; SSR3; SSTR3
Accession No.	Swiss-Prot#: P32745 NCBI Gene ID: 6753 Gene Accession: NP_001042.1
Uniprot	P32745
GeneID	6753;
Concentration	1.3mg/ml
Formulation	Rabbit IgG in pH7.4 PBS, 0.05% NaN ₃ , 40% Glycerol.
Storage	Store at -20°C

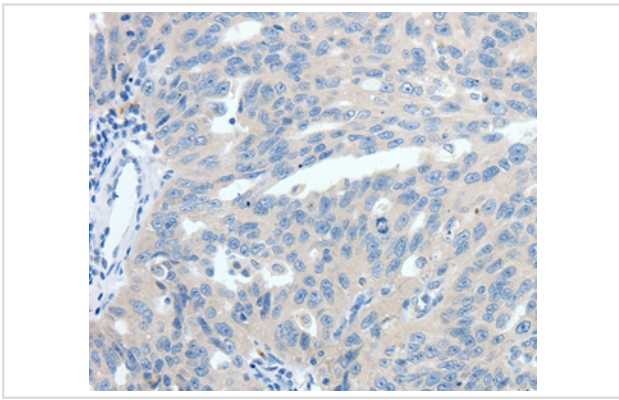
Application Details

Immunohistochemistry: 1:25-1:100

Images



Immunohistochemical analysis of paraffin-embedded Human breast cancer tissue using #37258 at dilution 1/40.



Immunohistochemical analysis of paraffin-embedded Human ovarian cancer tissue using #37258 at dilution 1/40.

Background

Somatostatin acts at many sites to inhibit the release of many hormones and other secretory proteins. The biological effects of somatostatin are probably mediated by a family of G protein-coupled receptors that are expressed in a tissue-specific manner. SSTR3 is a member of the superfamily of receptors having seven transmembrane segments and is expressed in highest levels in brain and pancreatic islets. SSTR3 is functionally coupled to adenylyl cyclase.

Note: This product is for in vitro research use only