

SYN1 Antibody

Catalog No: #37264

Orders: order@signalwayantibody.comSupport: tech@signalwayantibody.com

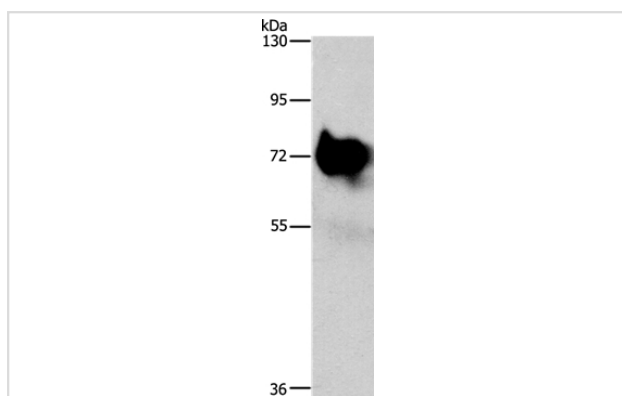
Description

Product Name	SYN1 Antibody
Host Species	Rabbit
Clonality	Polyclonal
Purification	Antigen affinity purification.
Applications	WB
Species Reactivity	Hu Ms Rt
Specificity	The antibody detects endogenous levels of total SYN1 protein.
Immunogen Type	Peptide
Immunogen Description	Synthetic peptide corresponding to residues near the C terminal of human synapsin I
Target Name	SYN1
Other Names	SYN1; SYN1a; SYN1b
Accession No.	Swiss-Prot#: P17600NCBI Gene ID: 6853Gene Accssion: NP_008881
Uniprot	P17600
GeneID	6853;
SDS-PAGE MW	74kd
Concentration	1.5mg/ml
Formulation	Rabbit IgG in pH7.4 PBS, 0.05% NaN ₃ , 40% Glycerol.
Storage	Store at -20°C

Application Details

Western blotting: 1:500-1:2000

Images



Gel: 8%SDS-PAGE
 Lysates (from left to right): Mouse brain tissue
 Amount of lysate: 30ug per lane
 Primary antibody: 1/750 dilution
 Secondary antibody dilution: 1/8000
 Exposure time: 2 seconds

Background

This gene is a member of the synapsin gene family. Synapsins encode neuronal phosphoproteins which associate with the cytoplasmic surface of synaptic vesicles. Family members are characterized by common protein domains, and they are implicated in synaptogenesis and the modulation of

neurotransmitter release, suggesting a potential role in several neuropsychiatric diseases. This member of the synapsin family plays a role in regulation of axonogenesis and synaptogenesis. The protein encoded serves as a substrate for several different protein kinases and phosphorylation may function in the regulation of this protein in the nerve terminal. Mutations in this gene may be associated with X-linked disorders with primary neuronal degeneration such as Rett syndrome. Alternatively spliced transcript variants encoding different isoforms have been identified

Note: This product is for in vitro research use only