

MAP1B Antibody

Catalog No: #37266

Orders: order@signalwayantibody.comSupport: tech@signalwayantibody.com

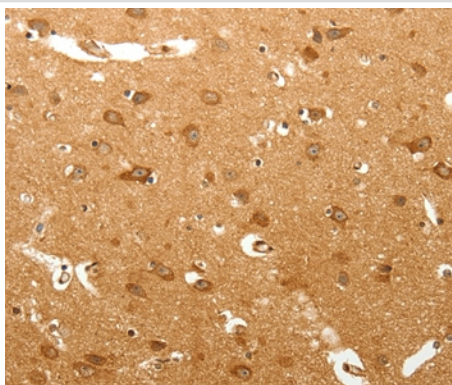
Description

Product Name	MAP1B Antibody
Host Species	Rabbit
Clonality	Polyclonal
Purification	Antigen affinity purification.
Applications	IHC
Species Reactivity	Hu
Specificity	The antibody detects endogenous levels of total MAP1B protein.
Immunogen Type	Peptide
Immunogen Description	Synthetic peptide corresponding to a region derived from internal residues of human microtubule-associated protein 1B
Target Name	MAP1B
Other Names	MAP5; FUTSCH
Accession No.	Swiss-Prot#: P46821NCBI Gene ID: 4131Gene Accssion: NP_005900
Uniprot	P46821
GeneID	4131;
Concentration	2.2mg/ml
Formulation	Rabbit IgG in pH7.4 PBS, 0.05% NaN ₃ , 40% Glycerol.
Storage	Store at -20°C

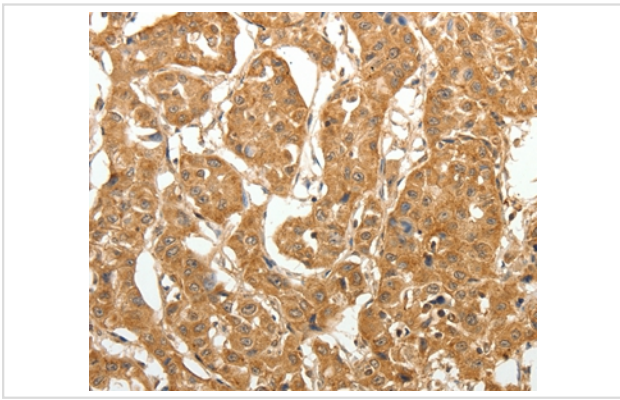
Application Details

Immunohistochemistry: 1:50-1:200

Images



Immunohistochemical analysis of paraffin-embedded Human brain tissue using #37266 at dilution 1/60.



Immunohistochemical analysis of paraffin-embedded Human lung cancer tissue using #37266 at dilution 1/60.

Background

This gene encodes a protein that belongs to the microtubule-associated protein family. The proteins of this family are thought to be involved in microtubule assembly, which is an essential step in neurogenesis. The product of this gene is a precursor polypeptide that presumably undergoes proteolytic processing to generate the final MAP1B heavy chain and LC1 light chain. Gene knockout studies of the mouse microtubule-associated protein 1B gene suggested an important role in development and function of the nervous system.

Note: This product is for in vitro research use only